



**TRILOBITE TESTING, INC.**

# DRILL STEM TEST REPORT

Meridian Energy, Inc.

**7-9S-21W Graham, KS**

1475 Ward Dr.  
Franktown, CO 80116

**Foster #1**

ATTN: Maxwell LaFon

Job Ticket: 64500

**DST#: 1**

Test Start: 2019.10.01 @ 01:34:13

## GENERAL INFORMATION:

Formation: **Lansing "E&F"**

Deviated: No Whipstock: ft (KB)

Time Tool Opened: 03:18:34

Time Test Ended: 08:50:49

Test Type: Conventional Bottom Hole (Initial)

Tester: Brannan Lonsdale

Unit No: 73

**Interval: 3566.00 ft (KB) To 3592.00 ft (KB) (TVD)**

Reference Elevations: 2275.00 ft (KB)

Total Depth: 3592.00 ft (KB) (TVD)

2265.00 ft (CF)

Hole Diameter: 7.88 inches Hole Condition: Poor

KB to GR/CF: 10.00 ft

**Serial #: 8700 Outside**

Press@RunDepth: 92.20 psig @ 3567.00 ft (KB)

Capacity: 8000.00 psig

Start Date: 2019.10.01

End Date:

2019.10.01

Last Calib.: 2019.10.01

Start Time: 01:34:14

End Time:

08:50:49

Time On Btm: 2019.10.01 @ 03:17:34

Time Off Btm: 2019.10.01 @ 07:07:49

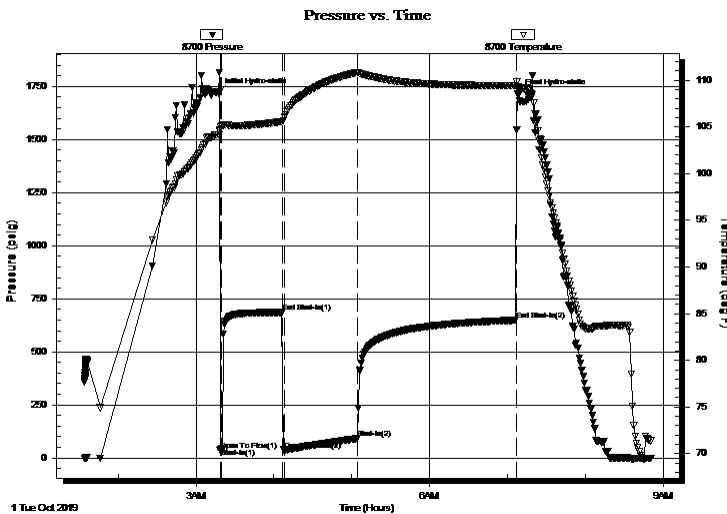
TEST COMMENT: 002- IF- Built to 1.49"

045- IS- No blow

060- FF- BOB 43mins. Built to 13.72"

120- FS- No blow

## PRESSURE SUMMARY



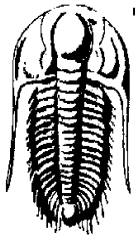
Time (Min.)	Pressure (psig)	Temp (deg F)	Annotation
0	1718.86	104.15	Initial Hydro-static
1	36.15	104.68	Open To Flow (1)
3	44.19	105.10	Shut-In(1)
49	685.58	105.56	End Shut-In(1)
51	37.37	106.05	Open To Flow (2)
107	92.20	110.81	Shut-In(2)
229	647.84	109.45	End Shut-In(2)
231	1717.39	109.29	Final Hydro-static

## Recovery

Length (ft)	Description	Volume (bbl)
150.00	MW, 20%M 80%W	2.13

## Gas Rates

Choke (inches)	Pressure (psig)	Gas Rate (Mcf/d)



**TRILOBITE  
TESTING, INC.**

## DRILL STEM TEST REPORT

Meridian Energy, Inc.  
1475 Ward Dr.  
Franktown, CO 80116  
ATTN: Maxwell LaFon

**7-9S-21W Graham, KS**

**Foster #1**

Job Ticket: 64500

**DST#: 1**

Test Start: 2019.10.01 @ 01:34:13

### GENERAL INFORMATION:

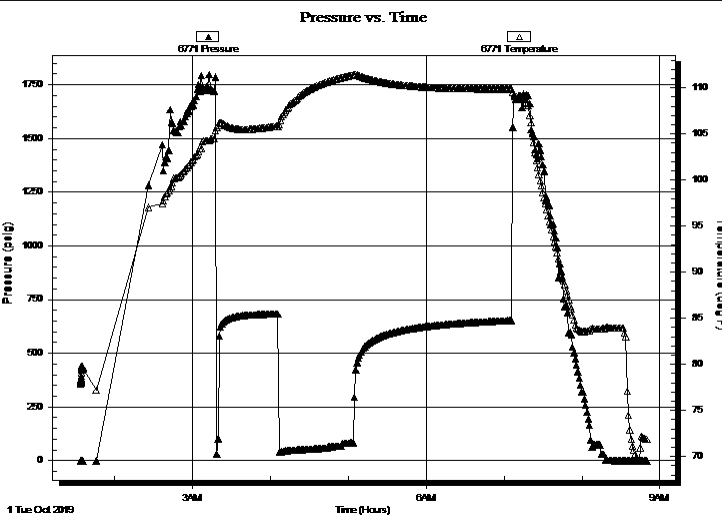
Formation: **Lansing "E&F"**  
 Deviated: No Whipstock: ft (KB)  
 Time Tool Opened: 03:18:34  
 Time Test Ended: 08:50:49  
 Interval: **3566.00 ft (KB) To 3592.00 ft (KB) (TVD)**  
 Total Depth: 3592.00 ft (KB) (TVD)  
 Hole Diameter: 7.88 inches Hole Condition: Poor  
 Test Type: Conventional Bottom Hole (Initial)  
 Tester: Brannan Lonsdale  
 Unit No: 73  
 Reference Elevations: 2275.00 ft (KB)  
 2265.00 ft (CF)  
 KB to GR/CF: 10.00 ft

**Serial #: 6771**

**Inside**

Press@RunDepth: psig @ 3567.00 ft (KB) Capacity: 8000.00 psig  
 Start Date: 2019.10.01 End Date: 2019.10.01 Last Calib.: 2019.10.01  
 Start Time: 01:34:01 End Time: 08:50:21 Time On Btm:  
 Time Off Btm:

TEST COMMENT: 002- IF- Built to 1.49"  
 045- IS- No blow  
 060- FF- BOB 43mins. Built to 13.72"  
 120- FS- No blow



### PRESSURE SUMMARY

Time (Min.)	Pressure (psig)	Temp (deg F)	Annotation

### Recovery

Length (ft)	Description	Volume (bbl)
150.00	MW, 20%M 80%W	2.13

### Gas Rates

Choke (inches)	Pressure (psig)	Gas Rate (Mcf/d)



**TRILOBITE  
TESTING, INC.**

# DRILL STEM TEST REPORT

**FLUID SUMMARY**

Meridian Energy, Inc.

**7-9S-21W Graham, KS**

1475 Ward Dr.  
Franktown, CO 80116

**Foster #1**

Job Ticket: 64500

**DST#: 1**

ATTN: Maxwell LaFon

Test Start: 2019.10.01 @ 01:34:13

## Mud and Cushion Information

Mud Type: Gel Chem

Cushion Type:

Oil API:

deg API

Mud Weight: 8.00 lb/gal

Cushion Length:

ft

Water Salinity:

39000 ppm

Viscosity: 63.00 sec/qt

Cushion Volume:

bbbl

Water Loss: 7.60 in<sup>3</sup>

Gas Cushion Type:

Resistivity: ohm.m

Gas Cushion Pressure:

psig

Salinity: 2000.00 ppm

Filter Cake: inches

## Recovery Information

Recovery Table

Length ft	Description	Volume bbl
150.00	MW, 20%M 80%W	2.126

Total Length: 150.00 ft      Total Volume: 2.126 bbl

Num Fluid Samples: 0

Num Gas Bombs: 0

Serial #:

Laboratory Name:

Laboratory Location:

Recovery Comments: RW: .17@69deg

