



TRILOBITE TESTING, INC.

DRILL STEM TEST REPORT

Cholla Production LLC
 10490 Bradford Rd
 Suite 201
 Littleton CO 80127
 ATTN: Charlie Strudevant

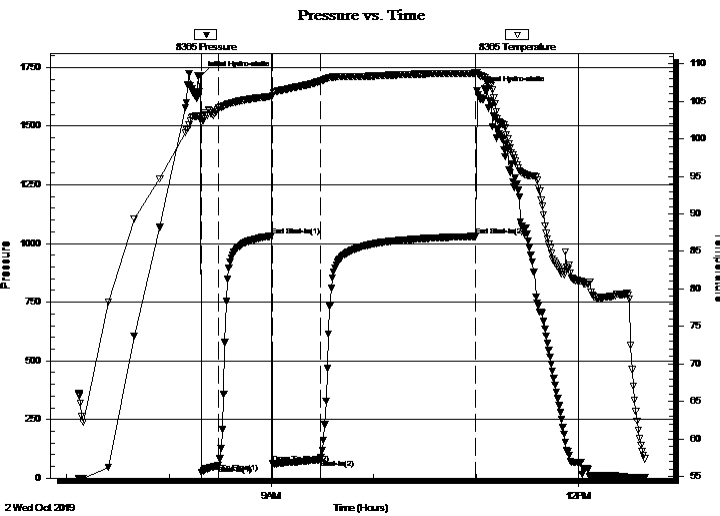
3/16S/20W/Rush
Zimmerman 1-3
 Job Ticket: 66300 **DST#: 2**
 Test Start: 2019.10.02 @ 07:07:00

GENERAL INFORMATION:

Formation: **Lansing D-F**
 Deviated: No Whipstock: ft (KB)
 Time Tool Opened: 08:19:02
 Time Test Ended: 12:39:02
 Interval: **3510.00 ft (KB) To 3555.00 ft (KB) (TVD)**
 Total Depth: 3555.00 ft (KB) (TVD)
 Hole Diameter: 7.80 inches Hole Condition: Fair
 Test Type: Conventional Bottom Hole (Initial)
 Tester: Ken Swinney
 Unit No: 72 Hays/ 60
 Reference Elevations: 2173.00 ft (KB)
 2166.00 ft (CF)
 KB to GR/CF: 7.00 ft

Serial #: 8365 Inside
 Press@RunDepth: 79.86 psig @ 3511.00 ft (KB) Capacity: psig
 Start Date: 2019.10.02 End Date: 2019.10.02 Last Calib.: 2019.10.02
 Start Time: 07:07:01 End Time: 12:39:02 Time On Btm: 2019.10.02 @ 08:18:47
 Time Off Btm: 2019.10.02 @ 11:00:32

TEST COMMENT: IF 10 Minutes/ Blow to 5 inch
 ISI 30 Minutes/ 1/2 inch blow back
 FF 30 Minutes/ Blow to BOB in 12 minutes/ total build 30 inches
 FSI 90 Minutes/ 1 1/2 inch blow back



PRESSURE SUMMARY

| Time (Min.) | Pressure (psig) | Temp (deg F) | Annotation |
|-------------|-----------------|--------------|----------------------|
| 0 | 1717.00 | 102.86 | Initial Hydro-static |
| 1 | 25.20 | 102.22 | Open To Flow (1) |
| 11 | 53.95 | 104.08 | Shut-In(1) |
| 41 | 1031.47 | 105.66 | End Shut-In(1) |
| 42 | 63.09 | 105.78 | Open To Flow (2) |
| 70 | 79.86 | 107.71 | Shut-In(2) |
| 161 | 1030.46 | 108.76 | End Shut-In(2) |
| 162 | 1652.06 | 108.85 | Final Hydro-static |

Recovery

| Length (ft) | Description | Volume (bbl) |
|-------------|------------------------|--------------|
| 169.00 | GOM/ G 15% O 35% M 50% | 1.28 |
| 0.00 | 263 feet GIP | 0.00 |
| | | |
| | | |
| | | |

Gas Rates

| | Choke (inches) | Pressure (psig) | Gas Rate (Mcf/d) |
|--|----------------|-----------------|------------------|
| | | | |



**TRILOBITE
TESTING, INC.**

DRILL STEM TEST REPORT

Cholla Production LLC
10490 Bradford Rd
Suite 201
Littleton CO 80127
ATTN: Charlie Strudevant

3/16S/20W/Rush

Zimmerman 1-3

Job Ticket: 66300

DST#: 2

Test Start: 2019.10.02 @ 07:07:00

GENERAL INFORMATION:

Formation: **Lansing D-F**

Deviated: No Whipstock: ft (KB)

Time Tool Opened: 08:19:02

Time Test Ended: 12:39:02

Test Type: Conventional Bottom Hole (Initial)

Tester: Ken Swinney

Unit No: 72 Hays/ 60

Interval: 3510.00 ft (KB) To 3555.00 ft (KB) (TVD)

Reference Elevations: 2173.00 ft (KB)

Total Depth: 3555.00 ft (KB) (TVD)

2166.00 ft (CF)

Hole Diameter: 7.80 inches Hole Condition: Fair

KB to GR/CF: 7.00 ft

Serial #: 6755

Outside

Press@RunDepth: 1022.29 psig @ 3512.00 ft (KB)

Capacity: psig

Start Date: 2019.10.02

End Date:

2019.10.02

Last Calib.:

2019.10.02

Start Time: 07:07:01

End Time:

12:39:02

Time On Btm:

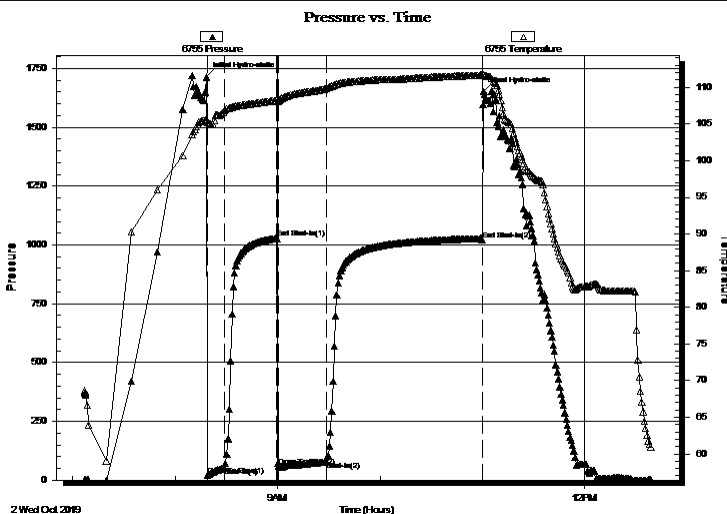
2019.10.02 @ 08:18:32

Time Off Btm:

2019.10.02 @ 11:00:47

TEST COMMENT: IF 10 Minutes/ Blow to 5 inch
ISI 30 Minutes/ 1/2 inch blow back
FF 30 Minutes/ Blow to BOB in 12 minutes/ total build 30 inches
FSI 90 Minutes/ 1 1/2 inch blow back

PRESSURE SUMMARY



| Time (Min.) | Pressure (psig) | Temp (deg F) | Annotation |
|-------------|-----------------|--------------|----------------------|
| 0 | 1714.97 | 105.55 | Initial Hydro-static |
| 1 | 21.09 | 105.18 | Open To Flow (1) |
| 11 | 52.79 | 106.88 | Shut-In(1) |
| 41 | 1028.40 | 108.19 | End Shut-In(1) |
| 42 | 60.02 | 108.12 | Open To Flow (2) |
| 71 | 78.39 | 109.89 | Shut-In(2) |
| 162 | 1022.29 | 111.69 | End Shut-In(2) |
| 163 | 1651.26 | 111.76 | Final Hydro-static |

Recovery

| Length (ft) | Description | Volume (bbl) |
|-------------|------------------------|--------------|
| 169.00 | GOM/ G 15% O 35% M 50% | 1.28 |
| 0.00 | 263 feet GIP | 0.00 |
| | | |
| | | |
| | | |

Gas Rates

| | Choke (inches) | Pressure (psig) | Gas Rate (Mcf/d) |
|--|----------------|-----------------|------------------|
| | | | |



**TRILOBITE
TESTING, INC.**

DRILL STEM TEST REPORT

FLUID SUMMARY

Cholla Production LLC

3/16S/20W/Rush

10490 Bradford Rd
Suite 201
Littleton CO 80127
ATTN: Charlie Strudevart

Zimmerman 1-3

Job Ticket: 66300

DST#: 2

Test Start: 2019.10.02 @ 07:07:00

Mud and Cushion Information

Mud Type: Gel Chem

Cushion Type:

Oil API:

35 deg API

Mud Weight: 9.00 lb/gal

Cushion Length:

ft

Water Salinity:

ppm

Viscosity: 53.00 sec/qt

Cushion Volume:

bbbl

Water Loss: 7.80 in³

Gas Cushion Type:

Resistivity: ohm.m

Gas Cushion Pressure:

psig

Salinity: 3200.00 ppm

Filter Cake: 1.00 inches

Recovery Information

Recovery Table

| Length ft | Description | Volume bbbl |
|--------------|------------------------|----------------|
| 169.00 | GOM/ G 15% O 35% M 50% | 1.277 |
| 0.00 | 263 feet GIP | 0.000 |

Total Length: 169.00 ft Total Volume: 1.277 bbl

Num Fluid Samples: 0

Num Gas Bombs: 0

Serial #:

Laboratory Name:

Laboratory Location:

Recovery Comments: Fluid Sampler Recovery

1700 ml Oil 600 ml Gas 300 ml Mud 300 psi

