



TRILOBITE TESTING, INC.

DRILL STEM TEST REPORT

GeoSouthern Operating II, LLC

6 8s 37w Sherman, Ks

1425 Lakefront Circle
The woodlands, Tx 77380

Sieck 1-6

Job Ticket: 64818

DST#: 1

ATTN: Ben Landes

Test Start: 2019.10.05 @ 12:35:00

GENERAL INFORMATION:

Formation: **LKC- K**

Deviated: No Whipstock: ft (KB)

Time Tool Opened: 14:35:30

Time Test Ended: 19:34:15

Test Type: Conventional Bottom Hole (Initial)

Tester: Bradley Walter

Unit No: 78

Interval: 4475.00 ft (KB) To 4570.00 ft (KB) (TVD)

Reference Elevations: 3505.00 ft (KB)

Total Depth: 4570.00 ft (KB) (TVD)

3500.00 ft (CF)

Hole Diameter: 7.88 inches Hole Condition: Good

KB to GR/CF: 5.00 ft

Serial #: 8522 Inside

Press@RunDepth: 73.37 psig @ 4476.00 ft (KB)

Capacity: 8000.00 psig

Start Date: 2019.10.05 End Date: 2019.10.05

Last Calib.: 2019.10.05

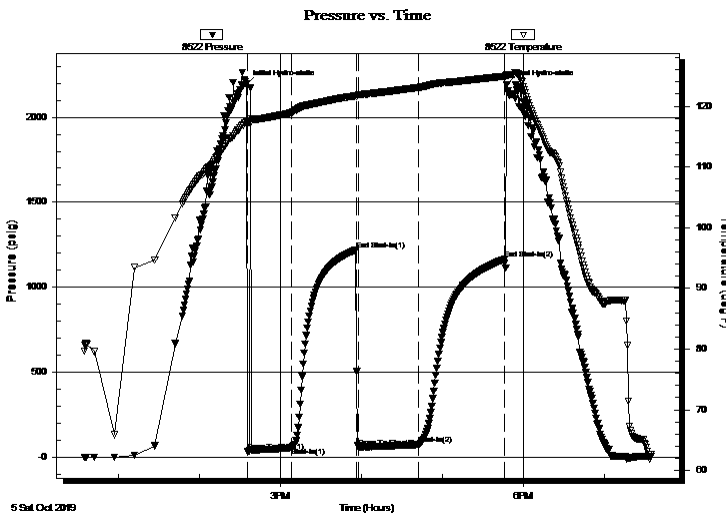
Start Time: 12:35:05 End Time: 19:34:14

Time On Btm: 2019.10.05 @ 14:35:00

Time Off Btm: 2019.10.05 @ 17:47:30

TEST COMMENT: 30- IF: 1 1/5" blow .
45- IS: No return
45- FF: 1 3/4" blow .
60- FSI: No return.

PRESSURE SUMMARY



Time (Min.)	Pressure (psig)	Temp (deg F)	Annotation
0	2192.02	117.36	Initial Hydro-static
1	34.77	116.94	Open To Flow (1)
33	55.79	118.91	Shut-In(1)
81	1219.06	121.71	End Shut-In(1)
83	58.73	121.87	Open To Flow (2)
128	73.37	123.08	Shut-In(2)
191	1163.89	124.93	End Shut-In(2)
193	2191.49	125.15	Final Hydro-static

Recovery

Length (ft)	Description	Volume (bbl)
130.00	ocm 15o 85m	0.70
30.00	go 10g 90o	0.42

Gas Rates

	Choke (inches)	Pressure (psig)	Gas Rate (Mcf/d)



**TRILOBITE
TESTING, INC.**

DRILL STEM TEST REPORT

FLUID SUMMARY

GeoSouthern Operating II, LLC

6 8s 37w Sherman, Ks

1425 Lakefront Circle
The woodlands, Tx 77380

Sieck 1-6

Job Ticket: 64818

DST#: 1

ATTN: Ben Landes

Test Start: 2019.10.05 @ 12:35:00

Mud and Cushion Information

Mud Type: Gel Chem

Cushion Type:

Oil API:

35 deg API

Mud Weight: 9.00 lb/gal

Cushion Length:

ft

Water Salinity:

0 ppm

Viscosity: 59.00 sec/qt

Cushion Volume:

bbbl

Water Loss: 9.59 in³

Gas Cushion Type:

Resistivity: ohm.m

Gas Cushion Pressure:

psig

Salinity: 3400.00 ppm

Filter Cake: 1.00 inches

Recovery Information

Recovery Table

Length ft	Description	Volume bbl
130.00	ocm 15o 85m	0.703
30.00	go 10g 90o	0.421

Total Length: 160.00 ft Total Volume: 1.124 bbl

Num Fluid Samples: 0

Num Gas Bombs: 0

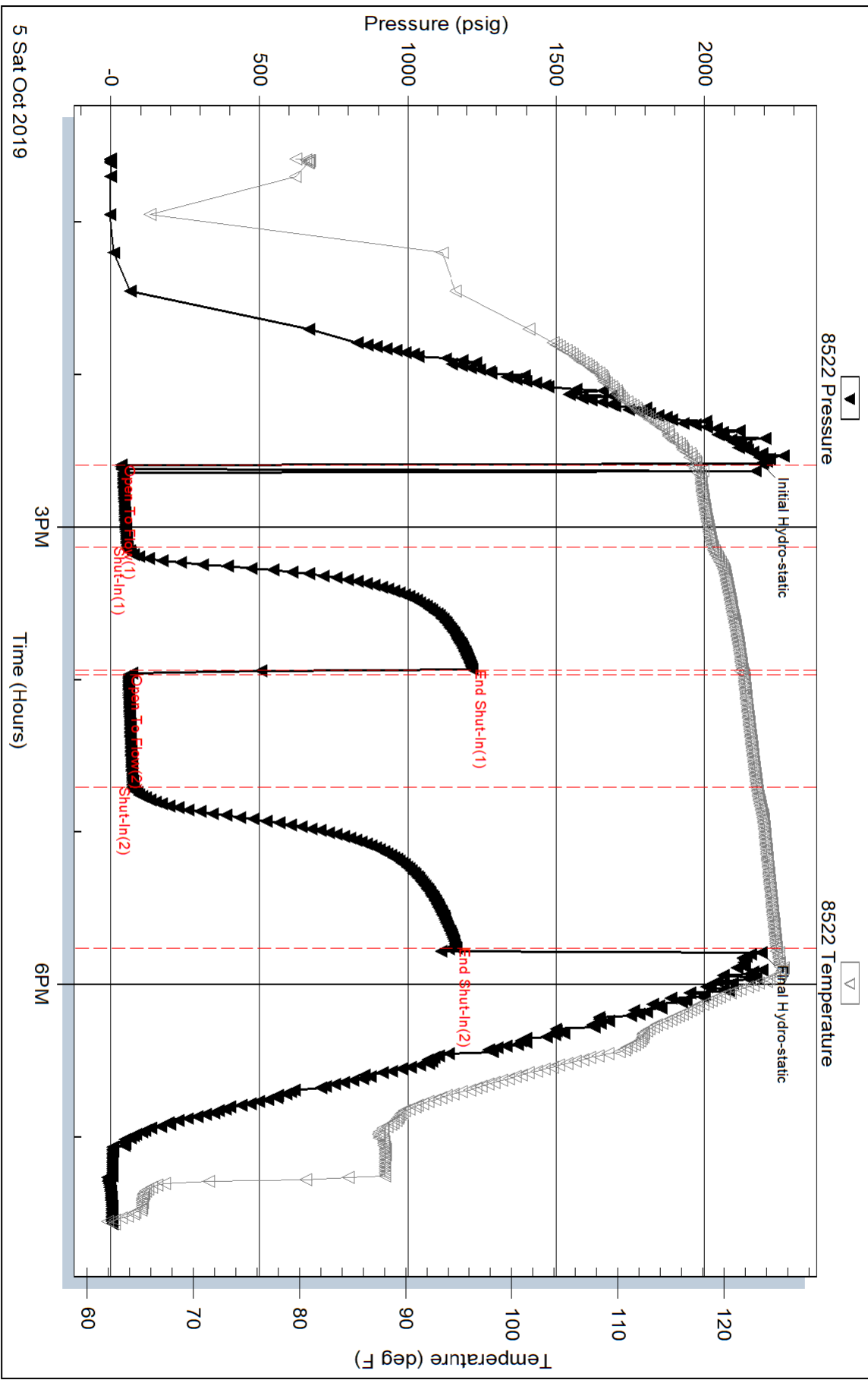
Serial #:

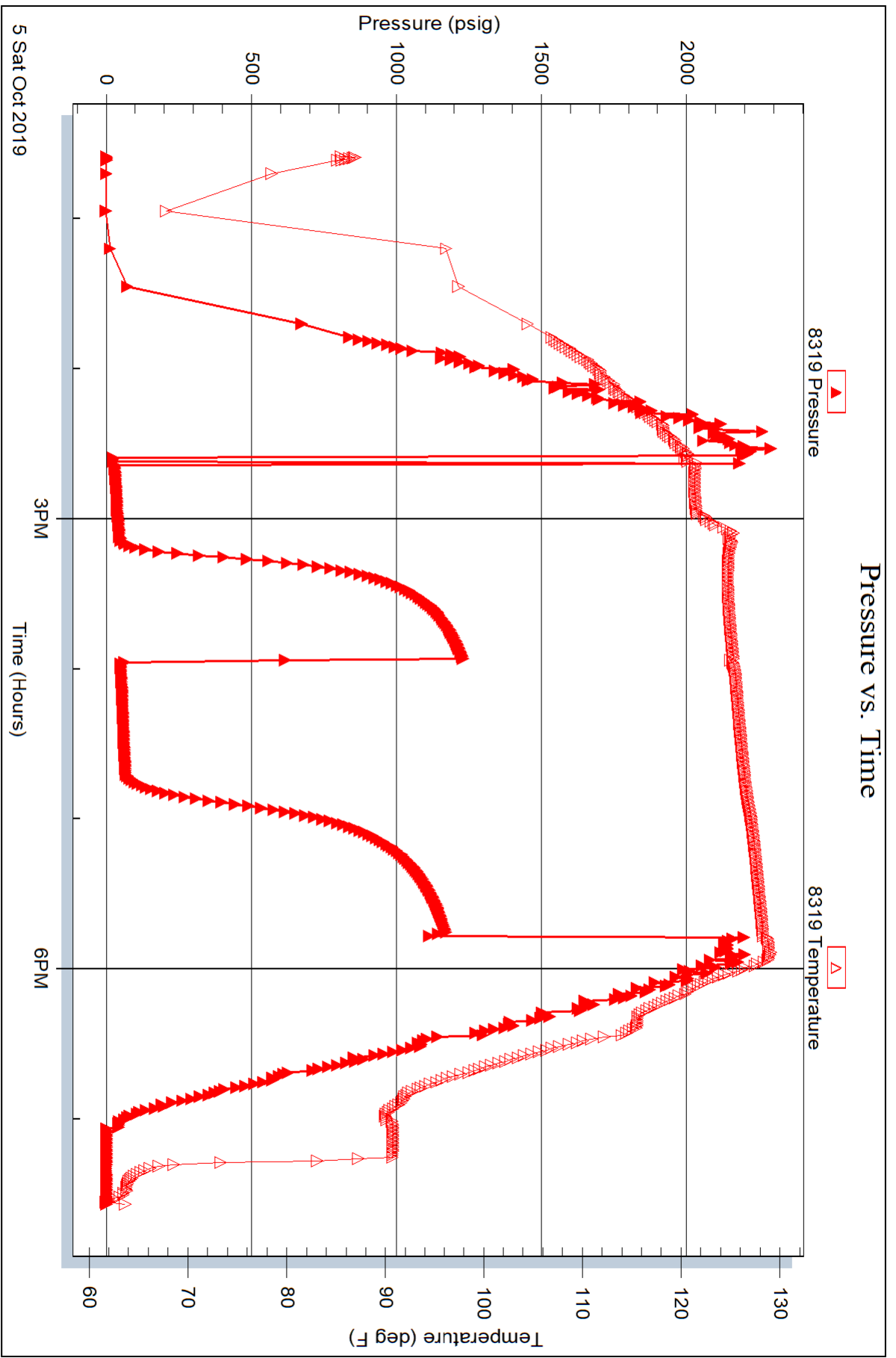
Laboratory Name:

Laboratory Location:

Recovery Comments: sampler 700ml oil 1300ml mud @ 60psi

Pressure vs. Time







TRILOBITE TESTING, INC.

DRILL STEM TEST REPORT

GeoSouthern Operating II, LLC

6 8s 37w Sherman, Ks

1425 Lakefront Circle
The woodlands, Tx 77380

Sieck 1-6

Job Ticket: 64819

DST#: 2

ATTN: Ben Landes

Test Start: 2019.10.06 @ 12:15:00

GENERAL INFORMATION:

Formation: **Marmaton**

Deviated: No Whipstock: ft (KB)

Time Tool Opened: 14:19:45

Time Test Ended: 19:17:15

Test Type: Conventional Bottom Hole (Reset)

Tester: Bradley Walter

Unit No: 78

Interval: **4624.00 ft (KB) To 4720.00 ft (KB) (TVD)**

Reference Elevations: 3505.00 ft (KB)

Total Depth: 4720.00 ft (KB) (TVD)

3500.00 ft (CF)

Hole Diameter: 7.88 inches Hole Condition: Good

KB to GR/CF: 5.00 ft

Serial #: **8522** Inside

Press@RunDepth: 44.34 psig @ 4625.00 ft (KB)

Capacity: 8000.00 psig

Start Date: 2019.10.06

End Date:

2019.10.06

Last Calib.: 2019.10.06

Start Time: 12:15:05

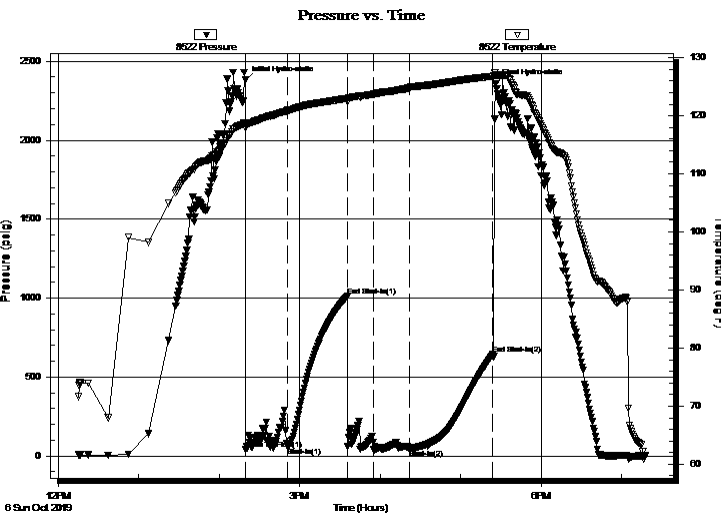
End Time:

19:17:14

Time On Btm: 2019.10.06 @ 14:19:15

Time Off Btm: 2019.10.06 @ 17:26:00

TEST COMMENT: 30- IF: 1" blow.
45- IS: No return.
45- FF: Surface blow.
60- FSI: No return.



PRESSURE SUMMARY

Time (Min.)	Pressure (psig)	Temp (deg F)	Annotation
0	2379.97	118.74	Initial Hydro-static
1	42.12	117.99	Open To Flow (1)
32	57.37	120.92	Shut-In(1)
77	1010.97	123.00	End Shut-In(1)
96	39.34	123.63	Open To Flow (2)
123	44.34	124.80	Shut-In(2)
185	642.37	126.81	End Shut-In(2)
187	2357.23	127.02	Final Hydro-static

Recovery

Length (ft)	Description	Volume (bbl)
25.00	socm 2o 98m	0.12

* Recovery from multiple tests

Gas Rates

Choke (inches)	Pressure (psig)	Gas Rate (Mcf/d)



**TRILOBITE
TESTING, INC.**

DRILL STEM TEST REPORT

FLUID SUMMARY

GeoSouthern Operating II, LLC

6 8s 37w Sherman, Ks

1425 Lakefront Circle
The woodlands, Tx 77380

Sieck 1-6

Job Ticket: 64819

DST#: 2

ATTN: Ben Landes

Test Start: 2019.10.06 @ 12:15:00

Mud and Cushion Information

Mud Type: Gel Chem

Cushion Type:

Oil API:

0 deg API

Mud Weight: 9.00 lb/gal

Cushion Length:

ft

Water Salinity:

0 ppm

Viscosity: 64.00 sec/qt

Cushion Volume:

bbbl

Water Loss: 8.79 in³

Gas Cushion Type:

Resistivity: ohm.m

Gas Cushion Pressure:

psig

Salinity: 4000.00 ppm

Filter Cake: 1.00 inches

Recovery Information

Recovery Table

Length ft	Description	Volume bbl
25.00	socm 2o 98m	0.123

Total Length: 25.00 ft Total Volume: 0.123 bbl

Num Fluid Samples: 0

Num Gas Bombs: 0

Serial #:

Laboratory Name:

Laboratory Location:

Recovery Comments: sampler 120ml oil 1880ml mud @ 30psi

Serial #: 8522

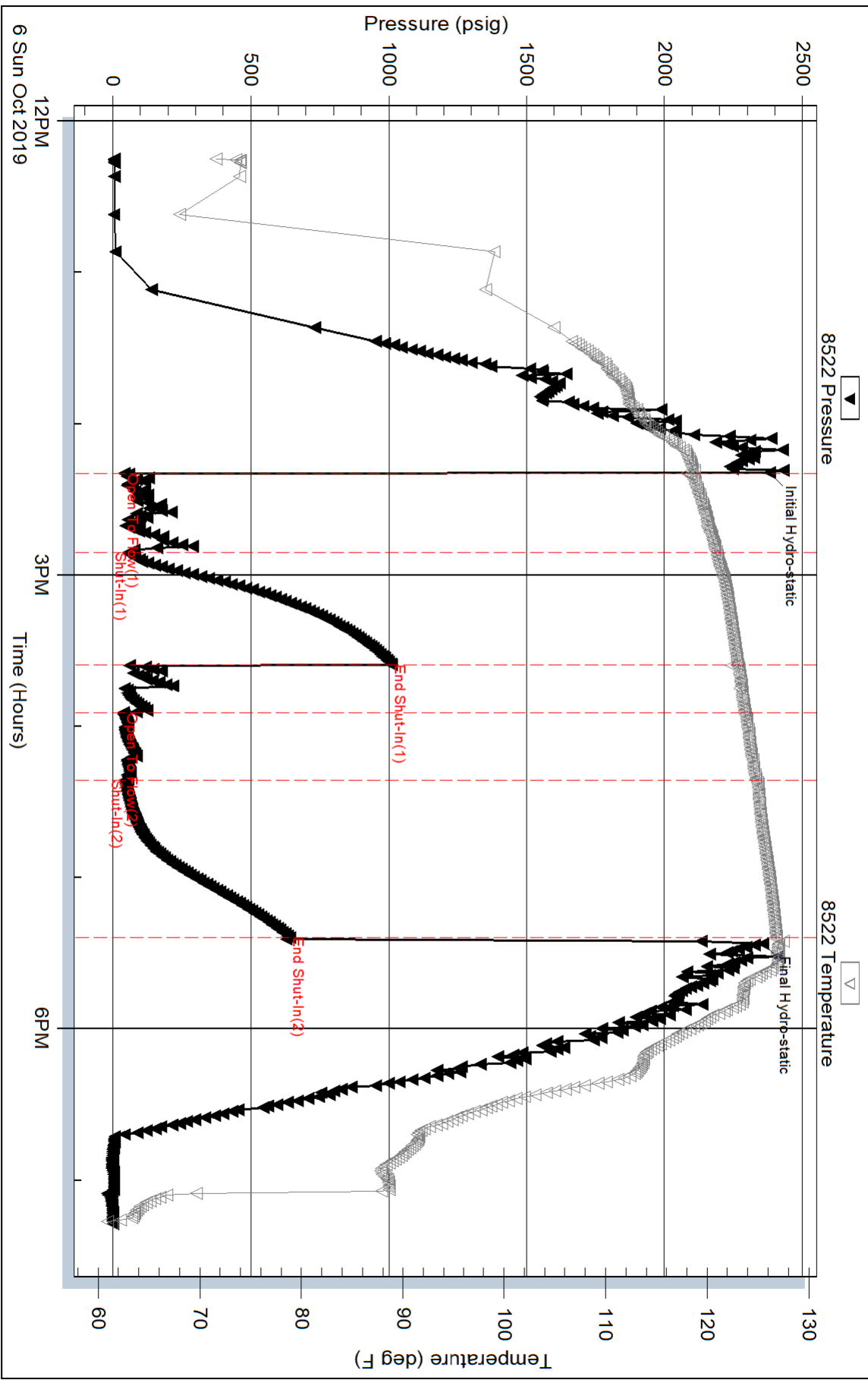
Inside

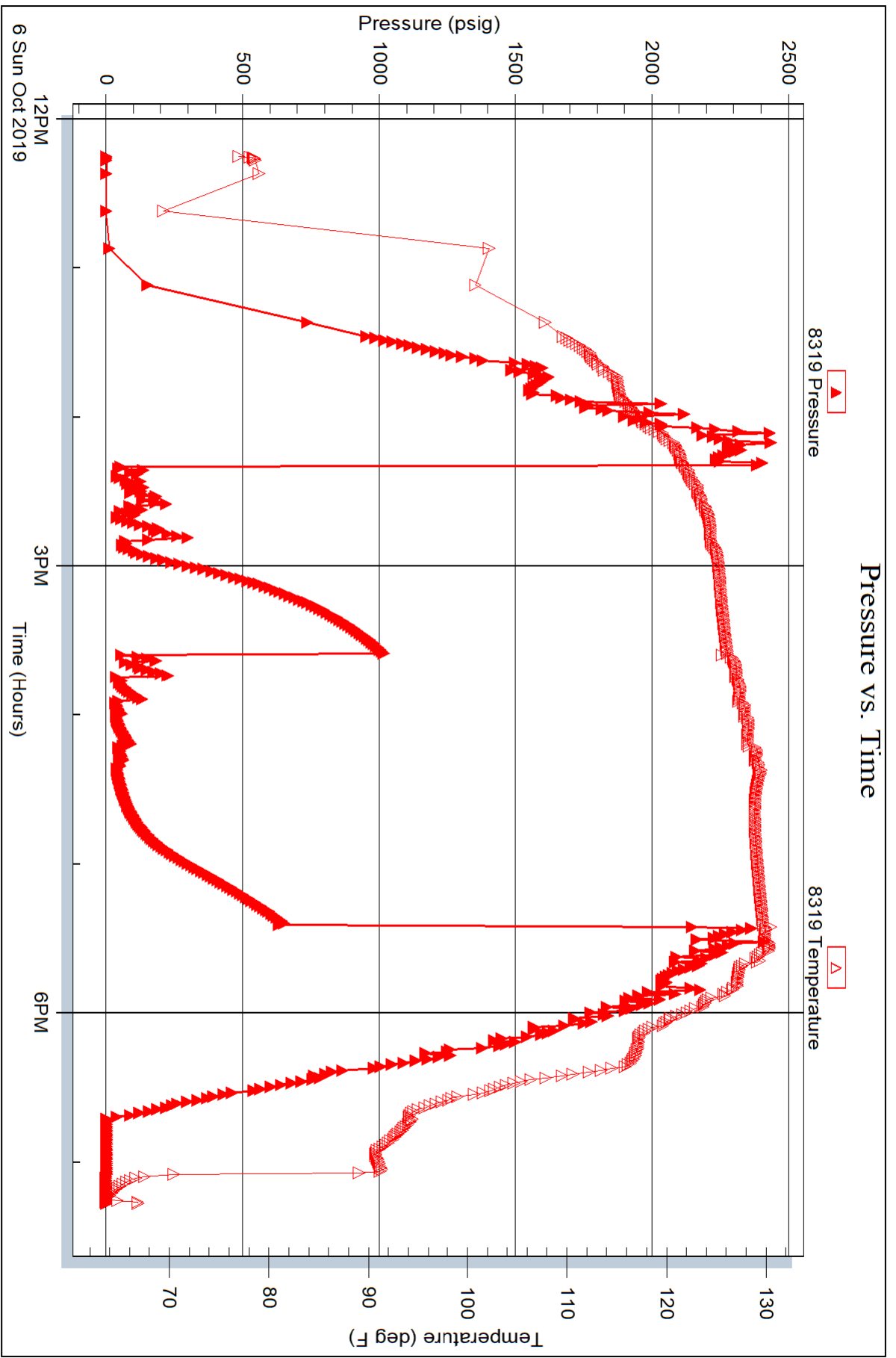
GeoSouthern Operating II, LLC

Seek 1-6

DST Test Number: 2

Pressure vs. Time







TRILOBITE TESTING, INC.

DRILL STEM TEST REPORT

GeoSouthern Operating II, LLC

6 8s 37w Sherman, Ks

1425 Lakefront Circle
The woodlands, Tx 77380

Sieck 1-6

Job Ticket: 64820

DST#: 3

ATTN: Ben Landes

Test Start: 2019.10.07 @ 00:40:00

GENERAL INFORMATION:

Formation: **Marmaton**

Deviated: No Whipstock: ft (KB)

Time Tool Opened: 02:33:15

Time Test Ended: 08:09:15

Test Type: Conventional Bottom Hole (Reset)

Tester: Bradley Walter

Unit No: 78

Interval: 4675.00 ft (KB) To 4720.00 ft (KB) (TVD)

Reference Elevations: 3505.00 ft (KB)

Total Depth: 4720.00 ft (KB) (TVD)

3500.00 ft (CF)

Hole Diameter: 7.88 inches Hole Condition: Good

KB to GR/CF: 5.00 ft

Serial #: 8522 Inside

Press@RunDepth: 38.90 psig @ 4676.00 ft (KB)

Capacity: 8000.00 psig

Start Date: 2019.10.07 End Date: 2019.10.07

Last Calib.: 2019.10.07

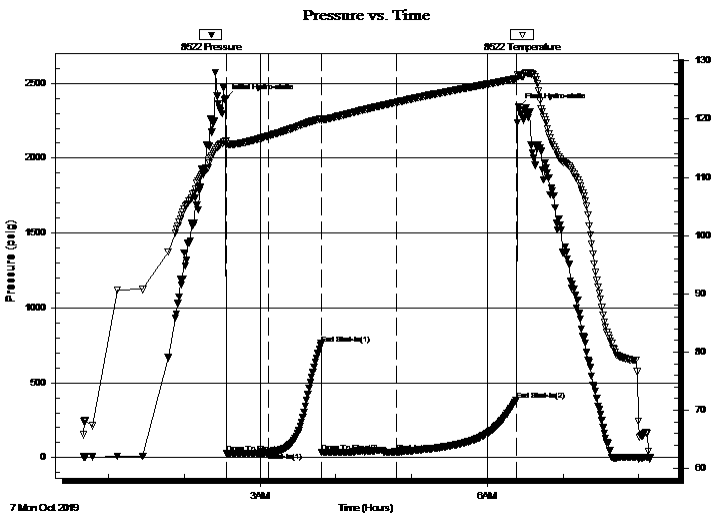
Start Time: 00:40:05 End Time: 08:09:14

Time On Btm: 2019.10.07 @ 02:32:45

Time Off Btm: 2019.10.07 @ 06:24:45

TEST COMMENT: 30- IF: 1 3/4" blow .
45- IS: Surface return.
60- FF: 1" blow .
90- FSI: No return.

PRESSURE SUMMARY



Time (Min.)	Pressure (psig)	Temp (deg F)	Annotation
0	2397.17	116.21	Initial Hydro-static
1	30.13	115.69	Open To Flow (1)
34	32.93	117.10	Shut-In(1)
76	761.64	120.06	End Shut-In(1)
76	36.48	119.78	Open To Flow (2)
135	38.90	122.87	Shut-In(2)
230	381.50	126.91	End Shut-In(2)
232	2340.13	127.29	Final Hydro-static

Recovery

Length (ft)	Description	Volume (bbl)
25.00	socm 1o 99m Oil puddle on top	0.12

* Recovery from multiple tests

Gas Rates

Choke (inches)	Pressure (psig)	Gas Rate (Mcf/d)



**TRILOBITE
TESTING, INC.**

DRILL STEM TEST REPORT

FLUID SUMMARY

GeoSouthern Operating II, LLC

6 8s 37w Sherman, Ks

1425 Lakefront Circle
The woodlands, Tx 77380

Sieck 1-6

Job Ticket: 64820

DST#: 3

ATTN: Ben Landes

Test Start: 2019.10.07 @ 00:40:00

Mud and Cushion Information

Mud Type: Gel Chem

Cushion Type:

Oil API:

0 deg API

Mud Weight: 9.00 lb/gal

Cushion Length:

ft

Water Salinity:

0 ppm

Viscosity: 47.00 sec/qt

Cushion Volume:

bbbl

Water Loss: 8.79 in³

Gas Cushion Type:

Resistivity: ohm.m

Gas Cushion Pressure:

psig

Salinity: 4000.00 ppm

Filter Cake: 1.00 inches

Recovery Information

Recovery Table

Length ft	Description	Volume bbl
25.00	socm 1o 99m Oil puddle on top	0.123

Total Length: 25.00 ft Total Volume: 0.123 bbl

Num Fluid Samples: 0

Num Gas Bombs: 0

Serial #:

Laboratory Name:

Laboratory Location:

Recovery Comments: Sampler- 80ml oil 1920ml mud @ 30 psi

