



**TRILOBITE TESTING, INC.**

# DRILL STEM TEST REPORT

Darrah Oil Operations LLC

**28/20S/13W/Barton**

125 N Market  
Suite 1425  
Wichita Kansas 67202  
ATTN: Seth Everson

**Gaunt 28C-1**

Job Ticket: 66292

**DST#: 2**

Test Start: 2019.09.11 @ 09:37:00

## GENERAL INFORMATION:

Formation: **Lansing/Kansas City**

Deviated: No Whipstock: ft (KB)

Time Tool Opened: 11:28:47

Time Test Ended: 16:23:02

Test Type: Conventional Bottom Hole (Initial)

Tester: Ken Swinney

Unit No: 72 Great Bend/ 14

Interval: **3454.00 ft (KB) To 3520.00 ft (KB) (TVD)**

Reference Elevations: 1897.00 ft (KB)

Total Depth: 3520.00 ft (KB) (TVD)

1892.00 ft (CF)

Hole Diameter: 7.80 inches Hole Condition: Fair

KB to GR/CF: 5.00 ft

**Serial #: 8365**

**Inside**

Press@RunDepth: 140.57 psig @ 3455.00 ft (KB)

Capacity: psig

Start Date: 2019.09.11

End Date:

2019.09.11

Last Calib.:

2019.09.11

Start Time: 09:37:01

End Time:

16:23:02

Time On Btm:

2019.09.11 @ 11:28:17

Time Off Btm:

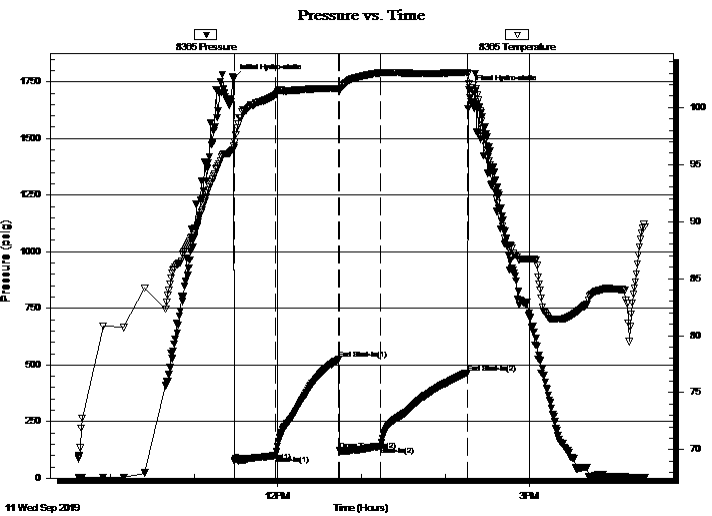
2019.09.11 @ 14:17:02

TEST COMMENT: IF 30 Mintues/ Blow to BOB in 10 1/2 minutes/ Total build 38 inches

ISI 45 Mintues/ 7 1/2 inch blow back

FF 30 Minutes/ Blow to BOB in 8 1/2 minutes/ Total build 30 inches

FSI 60 Minutes/ 26 inch blow back



## PRESSURE SUMMARY

Time (Min.)	Pressure (psig)	Temp (deg F)	Annotation
0	1766.30	96.60	Initial Hydro-static
1	73.39	96.44	Open To Flow (1)
30	100.28	101.11	Shut-In(1)
76	524.22	101.62	End Shut-In(1)
76	121.73	101.60	Open To Flow (2)
106	140.57	103.03	Shut-In(2)
168	465.26	103.02	End Shut-In(2)
169	1713.83	102.11	Final Hydro-static

## Recovery

Length (ft)	Description	Volume (bbl)
124.00	GMCWO/ G 25% M 15% W 30% O 30%	0.65
154.00	GMWCO/ G 65% M 5% W 5% O 25%	2.16
35.00	GO/ G 20% O 80%	0.49
0.00	863 feet GIP	0.00

## Gas Rates

	Choke (inches)	Pressure (psig)	Gas Rate (Mcf/d)



**TRILOBITE TESTING, INC.**

# DRILL STEM TEST REPORT

Darrah Oil Operations LLC

**28/20S/13W/Barton**

125 N Market  
Suite 1425  
Wichita Kansas 67202  
ATTN: Seth Everson

**Gaunt 28C-1**

Job Ticket: 66292

**DST#: 2**

Test Start: 2019.09.11 @ 09:37:00

## GENERAL INFORMATION:

Formation: **Lansing/Kansas City**

Deviated: No Whipstock: ft (KB)

Time Tool Opened: 11:28:47

Time Test Ended: 16:23:02

Test Type: Conventional Bottom Hole (Initial)

Tester: Ken Swinney

Unit No: 72 Great Bend/ 14

Interval: **3454.00 ft (KB) To 3520.00 ft (KB) (TVD)**

Reference Elevations: 1897.00 ft (KB)

Total Depth: 3520.00 ft (KB) (TVD)

1892.00 ft (CF)

Hole Diameter: 7.80 inches Hole Condition: Fair

KB to GR/CF: 5.00 ft

**Serial #: 6755 Outside**

Press@RunDepth: 466.98 psig @ 3456.00 ft (KB)

Capacity: psig

Start Date: 2019.09.11

End Date:

2019.09.11

Last Calib.:

2019.09.11

Start Time: 09:37:01

End Time:

16:23:02

Time On Btm:

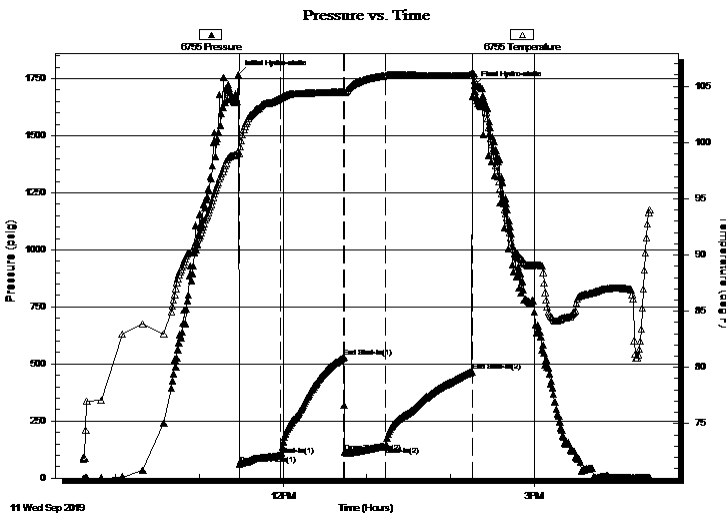
2019.09.11 @ 11:28:02

Time Off Btm:

2019.09.11 @ 14:17:02

TEST COMMENT: IF 30 Mintues/ Blow to BOB in 10 1/2 minutes/ Total build 38 inches  
 ISI 45 Mintues/ 7 1/2 inch blow back  
 FF 30 Minutes/ Blow to BOB in 8 1/2 minutes/ Total build 30 inches  
 FSI 60 Minutes/ 26 inch blow back

## PRESSURE SUMMARY



Time (Min.)	Pressure (psig)	Temp (deg F)	Annotation
0	1767.42	99.19	Initial Hydro-static
1	61.28	99.04	Open To Flow (1)
31	100.50	103.97	Shut-In(1)
76	528.81	104.48	End Shut-In(1)
77	113.09	104.49	Open To Flow (2)
106	139.63	105.97	Shut-In(2)
168	466.98	106.01	End Shut-In(2)
169	1720.63	105.97	Final Hydro-static

## Recovery

Length (ft)	Description	Volume (bbl)
124.00	GMCWO/ G 25% M 15% W 30% O 30%	0.65
154.00	GMWCO/ G 65% M 5% W 5% O 25%	2.16
35.00	GO/ G 20% O 80%	0.49
0.00	863 feet GIP	0.00

## Gas Rates

	Choke (inches)	Pressure (psig)	Gas Rate (Mcf/d)



**TRILOBITE  
TESTING, INC.**

# DRILL STEM TEST REPORT

**FLUID SUMMARY**

Darrah Oil Operations LLC

**28/20S/13W/Barton**

125 N Market  
Suite 1425  
Wichita Kansas 67202  
ATTN: Seth Everson

**Gaunt 28C-1**

Job Ticket: 66292

**DST#: 2**

Test Start: 2019.09.11 @ 09:37:00

## Mud and Cushion Information

Mud Type: Gel Chem  
Mud Weight: 9.00 lb/gal  
Viscosity: 52.00 sec/qt  
Water Loss: 8.78 in<sup>3</sup>  
Resistivity: ohm.m  
Salinity: 5000.00 ppm  
Filter Cake: 1.00 inches

Cushion Type:  
Cushion Length: ft  
Cushion Volume: bbl  
Gas Cushion Type:  
Gas Cushion Pressure: psig

Oil API: 31 deg API  
Water Salinity: 50000 ppm

## Recovery Information

Recovery Table

Length ft	Description	Volume bbl
124.00	GMCWO/ G 25% M 15% W 30% O 30%	0.646
154.00	GMWCO/ G 65% M 5% W 5% O 25%	2.160
35.00	GO/ G 20% O 80%	0.491
0.00	863 feet GIP	0.000

Total Length: 313.00 ft      Total Volume: 3.297 bbl

Num Fluid Samples: 0      Num Gas Bombs: 0      Serial #:

Laboratory Name:      Laboratory Location:

Recovery Comments: Recovery Resistivity .111 ohms @ 93 deg

# Pressure vs. Time

