



TRILOBITE TESTING, INC.

DRILL STEM TEST REPORT

Darrah Oil Company

2-21s-14w

125 N Market Suite 1425 Wichita KS 67202+1425

Birback-Keller Unit

ATTN: Seth Evenson

Job Ticket: 65823

DST#: 1

Test Start: 2019.09.23 @ 03:24:00

GENERAL INFORMATION:

Formation: **LKC H-J**

Deviated: No Whipstock: ft (KB)

Time Tool Opened: 06:36:15

Time Test Ended: 10:24:15

Test Type: Conventional Straddle (Initial)

Tester: Benny Mulligan

Unit No: 66

Interval: 3445.00 ft (KB) To 3525.00 ft (KB) (TVD)

Reference Elevations: 1924.00 ft (KB)

Total Depth: 3550.00 ft (KB) (TVD)

1919.00 ft (CF)

Hole Diameter: 6.88 inches Hole Condition: Fair

KB to GR/CF: 5.00 ft

Serial #: 6666

Inside

Press@RunDepth: psig @ 3446.00 ft (KB)

Capacity: 8000.00 psig

Start Date: 2019.09.23

End Date:

2019.09.23

Last Calib.:

2019.09.23

Start Time: 03:24:01

End Time:

10:24:15

Time On Btm:

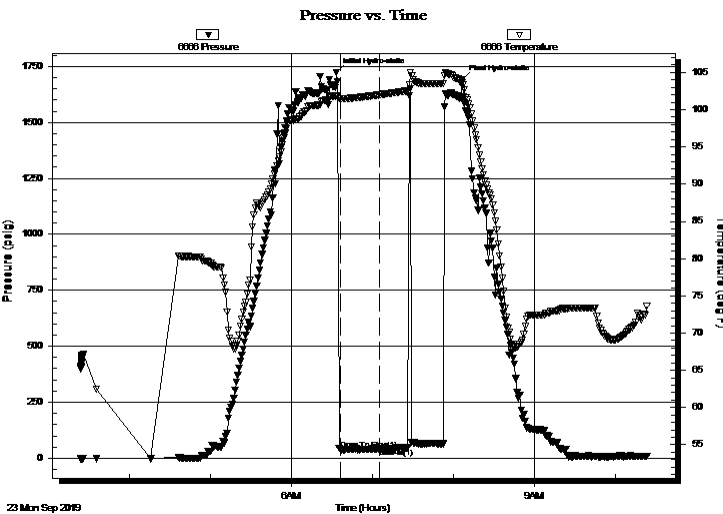
2019.09.23 @ 06:33:30

Time Off Btm:

2019.09.23 @ 08:07:00

TEST COMMENT: IF-30- built to 4"

ISI-tool would not close so pulled the test



PRESSURE SUMMARY

Time (Min.)	Pressure (psig)	Temp (deg F)	Annotation
0	1723.52	101.89	Initial Hydro-static
3	38.98	101.47	Open To Flow (1)
32	41.75	101.99	Shut-In(1)
94	1691.71	103.63	Final Hydro-static

Recovery

Length (ft)	Description	Volume (bbl)
90.00	O.C.M. 15%O 85%M	0.50

Gas Rates

Choke (inches)	Pressure (psig)	Gas Rate (Mcf/d)



TRILOBITE TESTING, INC.

DRILL STEM TEST REPORT

Darrah Oil Company

2-21s-14w

125 N Market Suite 1425 Wichita KS 67202+1425

Birback-Keller Unit

ATTN: Seth Evenson

Job Ticket: 65823

DST#: 1

Test Start: 2019.09.23 @ 03:24:00

GENERAL INFORMATION:

Formation: **LKC H-J**

Deviated: No Whipstock: ft (KB)

Time Tool Opened: 06:36:15

Time Test Ended: 10:24:15

Test Type: Conventional Straddle (Initial)

Tester: Benny Mulligan

Unit No: 66

Interval: 3445.00 ft (KB) To 3525.00 ft (KB) (TVD)

Reference Elevations: 1924.00 ft (KB)

Total Depth: 3550.00 ft (KB) (TVD)

1919.00 ft (CF)

Hole Diameter: 6.88 inches Hole Condition: Fair

KB to GR/CF: 5.00 ft

Serial #: 8874 Outside

Press@RunDepth: psig @ 3446.00 ft (KB)

Capacity: 8000.00 psig

Start Date: 2019.09.23

End Date:

2019.09.23

Last Calib.:

2019.09.23

Start Time: 03:24:01

End Time:

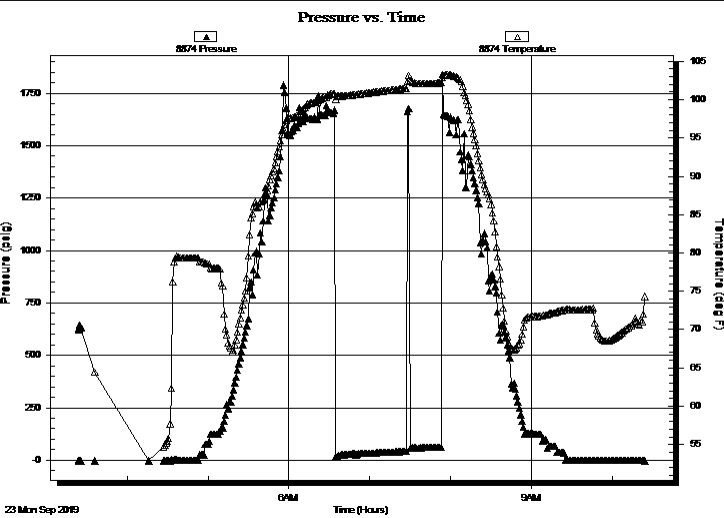
10:24:06

Time On Btm:

Time Off Btm:

TEST COMMENT: IF-30- built to 4"

ISI-tool would not close so pulled the test



PRESSURE SUMMARY

Time (Min.)	Pressure (psig)	Temp (deg F)	Annotation

Recovery

Length (ft)	Description	Volume (bbl)
90.00	O.C.M. 15%O 85%M	0.50

Gas Rates

Choke (inches)	Pressure (psig)	Gas Rate (Mcf/d)



**TRILOBITE
TESTING, INC.**

DRILL STEM TEST REPORT

FLUID SUMMARY

Darrah Oil Company

2-21s-14w

125 N Market Suite 1425 Wichita KS 67202+1425

Birback-Keller Unit

Job Ticket: 65823

DST#: 1

ATTN: Seth Evenson

Test Start: 2019.09.23 @ 03:24:00

Mud and Cushion Information

Mud Type: Gel Chem

Cushion Type:

Oil API:

deg API

Mud Weight: 9.00 lb/gal

Cushion Length:

ft

Water Salinity:

ppm

Viscosity: 54.00 sec/qt

Cushion Volume:

bbf

Water Loss: 7.99 in³

Gas Cushion Type:

Resistivity: ohm.m

Gas Cushion Pressure:

psig

Salinity: 1500.00 ppm

Filter Cake: 1.00 inches

Recovery Information

Recovery Table

Length ft	Description	Volume bbf
90.00	O.C.M. 15%O 85%M	0.504

Total Length: 90.00 ft Total Volume: 0.504 bbf

Num Fluid Samples: 0

Num Gas Bombs: 0

Serial #:

Laboratory Name:

Laboratory Location:

Recovery Comments:

Serial #: 6666

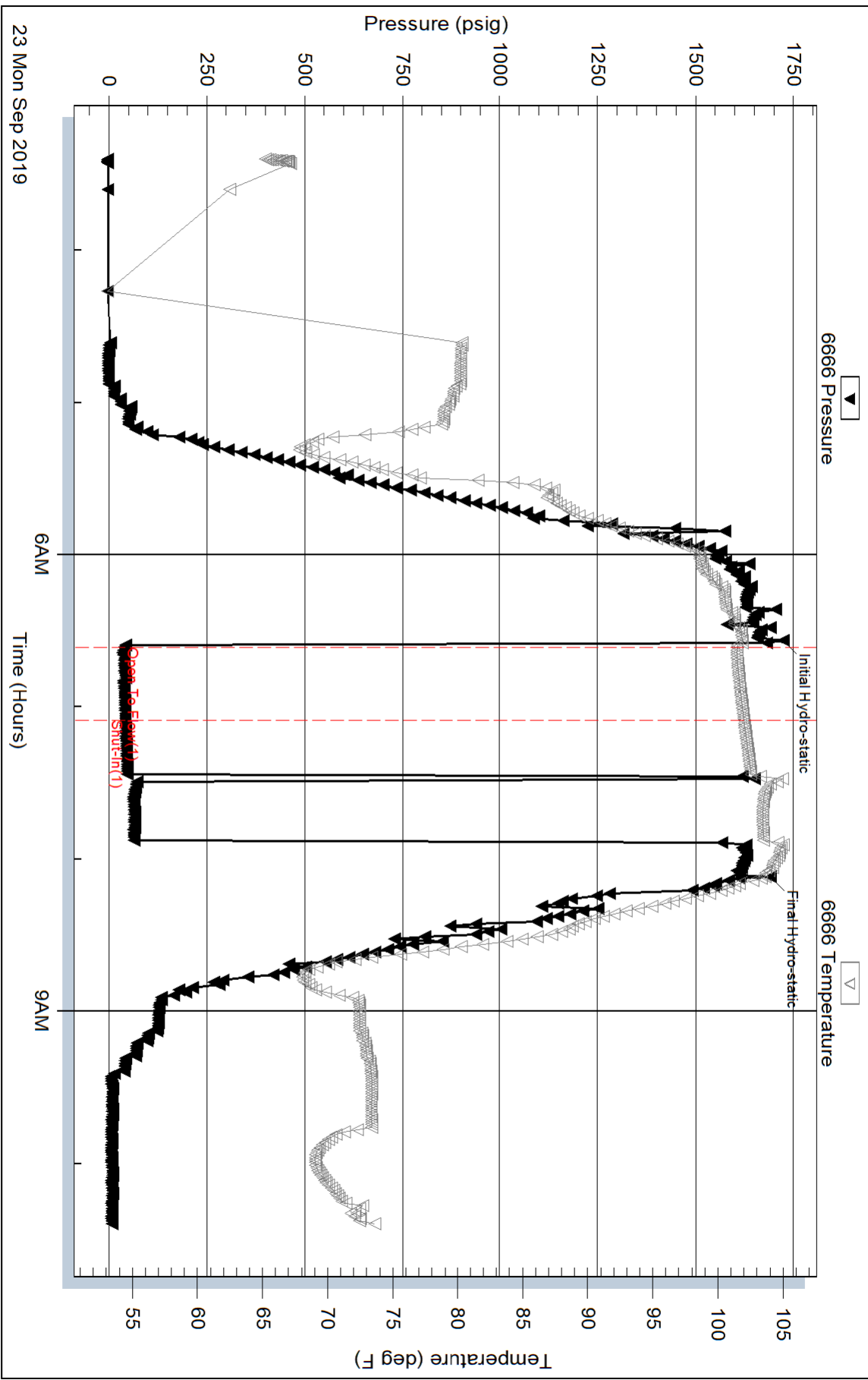
Inside

Darrah Oil Company

Birback-Keller Unit

DST Test Number: 1

Pressure vs. Time



Trilobite Testing, Inc

Ref. No: 65823

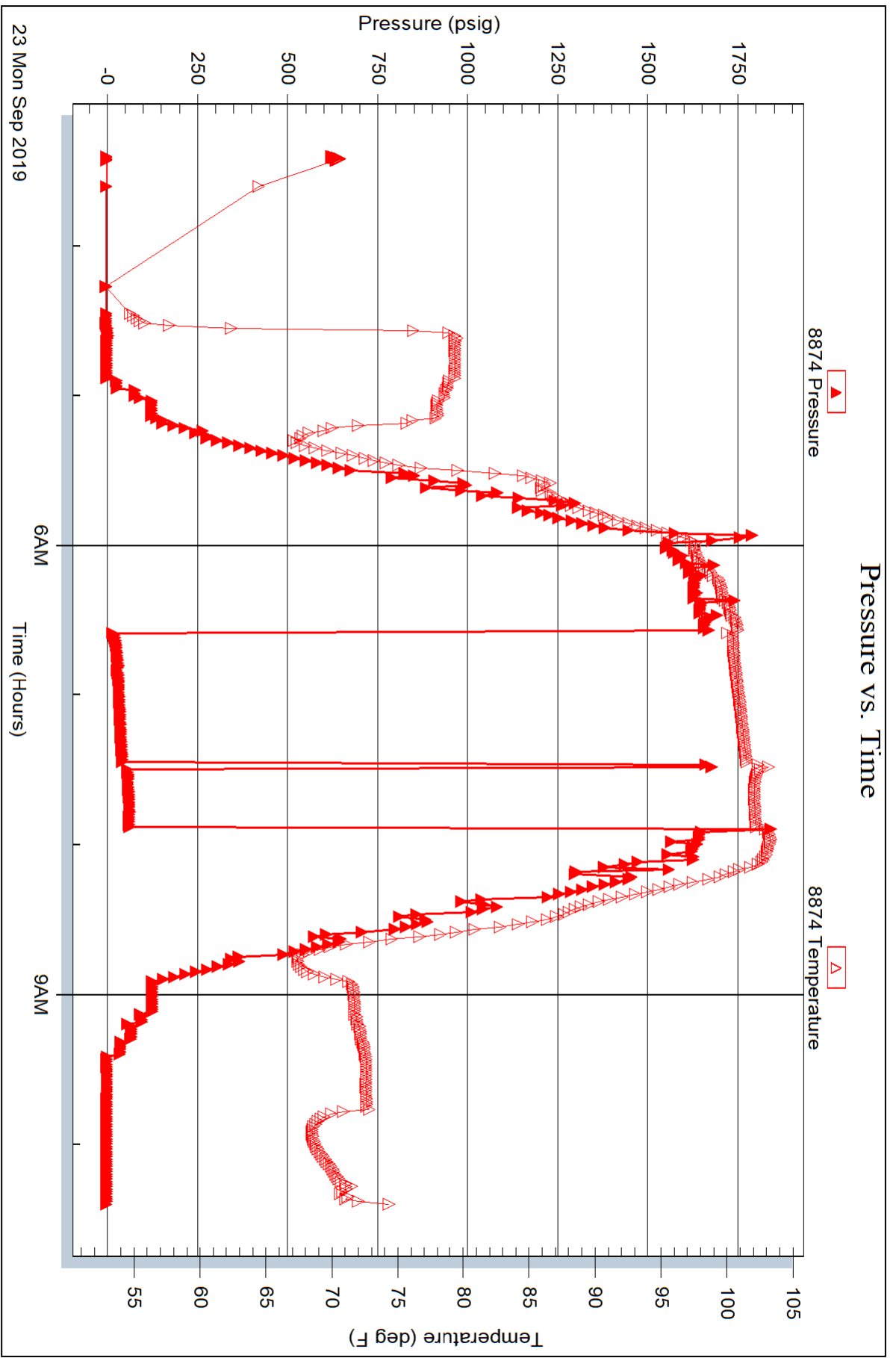
Printed: 2019.09.23 @ 11:16:44

Serial #: 8874

Outside Darrah Oil Company

Birback-Keller Unit

DST Test Number: 1



Trilobite Testing, Inc

Ref. No: 65823

Printed: 2019.09.23 @ 11:16:44