



**TRILOBITE TESTING, INC.**

# DRILL STEM TEST REPORT

Darrah Oil Company

**2-21s-14w**

125 N Market Suite 1425 Wichita KS 67202+1425

**Birback-Keller Unit**

ATTN: Seth Evenson

Job Ticket: 65824

**DST#: 2**

Test Start: 2019.09.23 @ 17:46:00

## GENERAL INFORMATION:

Formation: **Viola-Simpson**

Deviated: No Whipstock: ft (KB)

Time Tool Opened: 20:43:00

Time Test Ended: 23:40:00

Test Type: Conventional Bottom Hole (Initial)

Tester: Benny Mulligan

Unit No: 66

**Interval: 3550.00 ft (KB) To 3610.00 ft (KB) (TVD)**

Reference Elevations: 1924.00 ft (KB)

Total Depth: 3610.00 ft (KB) (TVD)

1919.00 ft (CF)

Hole Diameter: 6.88 inches Hole Condition: Fair

KB to GR/CF: 5.00 ft

**Serial #: 6666**

**Inside**

Press@RunDepth: 35.01 psig @ 3551.00 ft (KB)

Capacity: 8000.00 psig

Start Date: 2019.09.23

End Date: 2019.09.23

Last Calib.: 2019.09.23

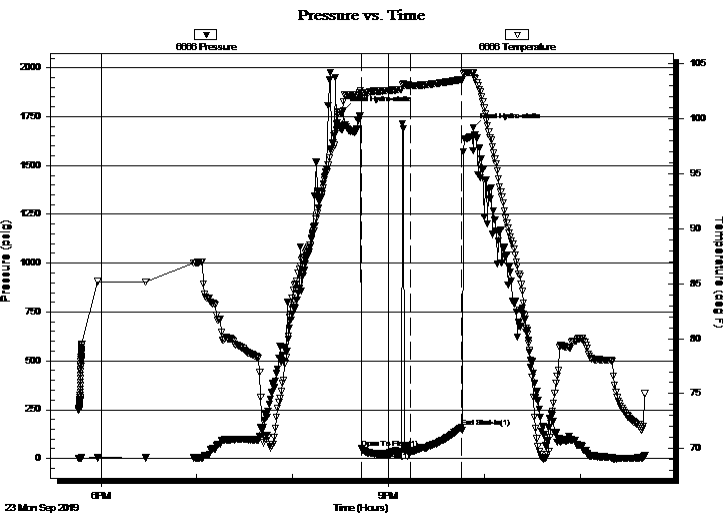
Start Time: 17:46:01

End Time: 23:40:00

Time On Btm: 2019.09.23 @ 20:31:45

Time Off Btm: 2019.09.23 @ 21:53:00

**TEST COMMENT:** IF-30- weak surface blow that died 4 mins into the flow  
ISI-30- no blow back



## PRESSURE SUMMARY

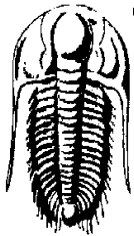
Time (Min.)	Pressure (psig)	Temp (deg F)	Annotation
0	1782.08	101.58	Initial Hydro-static
12	50.66	102.29	Open To Flow (1)
42	35.01	103.02	Shut-In(1)
74	159.13	103.56	End Shut-In(1)
82	1694.79	104.20	Final Hydro-static

## Recovery

Length (ft)	Description	Volume (bbl)
2.00	Mud 100%M	0.01

## Gas Rates

Choke (inches)	Pressure (psig)	Gas Rate (Mcf/d)



**TRILOBITE  
TESTING, INC.**

**DRILL STEM TEST REPORT**

Darrah Oil Company

**2-21s-14w**

125 N Market Suite 1425 Wichita KS 67202+1425

**Birback-Keller Unit**

ATTN: Seth Evenson

Job Ticket: 65824

**DST#: 2**

Test Start: 2019.09.23 @ 17:46:00

**GENERAL INFORMATION:**

Formation: **Viola-Simpson**

Deviated: No Whipstock: ft (KB)

Test Type: Conventional Bottom Hole (Initial)

Time Tool Opened: 20:43:00

Tester: Benny Mulligan

Time Test Ended: 23:40:00

Unit No: 66

**Interval: 3550.00 ft (KB) To 3610.00 ft (KB) (TVD)**

Reference Elevations: 1924.00 ft (KB)

Total Depth: 3610.00 ft (KB) (TVD)

1919.00 ft (CF)

Hole Diameter: 6.88 inches Hole Condition: Fair

KB to GR/CF: 5.00 ft

**Serial #: 8874 Outside**

Press@RunDepth: psig @ 3551.00 ft (KB)

Capacity: 8000.00 psig

Start Date: 2019.09.23 End Date: 2019.09.23

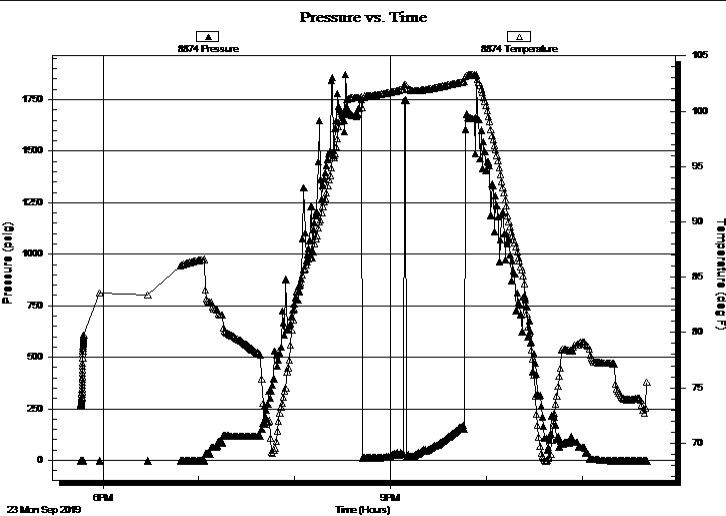
Last Calib.: 2019.09.23

Start Time: 17:46:01 End Time: 23:40:06

Time On Btm:

Time Off Btm:

**TEST COMMENT:** IF-30- weak surface blow that died 4 mins into the flow  
ISI-30- no blow back



**PRESSURE SUMMARY**

Time (Min.)	Pressure (psig)	Temp (deg F)	Annotation

**Recovery**

Length (ft)	Description	Volume (bbl)
2.00	Mud 100%M	0.01

**Gas Rates**

Choke (inches)	Pressure (psig)	Gas Rate (Mcf/d)



**TRILOBITE  
TESTING, INC.**

# DRILL STEM TEST REPORT

**FLUID SUMMARY**

Darrah Oil Company

**2-21s-14w**

125 N Market Suite 1425 Wichita KS 67202+1425

**Birback-Keller Unit**

Job Ticket: 65824

**DST#: 2**

ATTN: Seth Evenson

Test Start: 2019.09.23 @ 17:46:00

## Mud and Cushion Information

Mud Type: Gel Chem

Cushion Type:

Oil API:

deg API

Mud Weight: 9.00 lb/gal

Cushion Length:

ft

Water Salinity:

ppm

Viscosity: 48.00 sec/qt

Cushion Volume:

bbbl

Water Loss: 7.99 in<sup>3</sup>

Gas Cushion Type:

Resistivity: ohm.m

Gas Cushion Pressure:

psig

Salinity: 1500.00 ppm

Filter Cake: 1.00 inches

## Recovery Information

Recovery Table

Length ft	Description	Volume bbl
2.00	Mud 100%M	0.008

Total Length: 2.00 ft      Total Volume: 0.008 bbl

Num Fluid Samples: 0

Num Gas Bombs: 0

Serial #:

Laboratory Name:

Laboratory Location:

Recovery Comments:

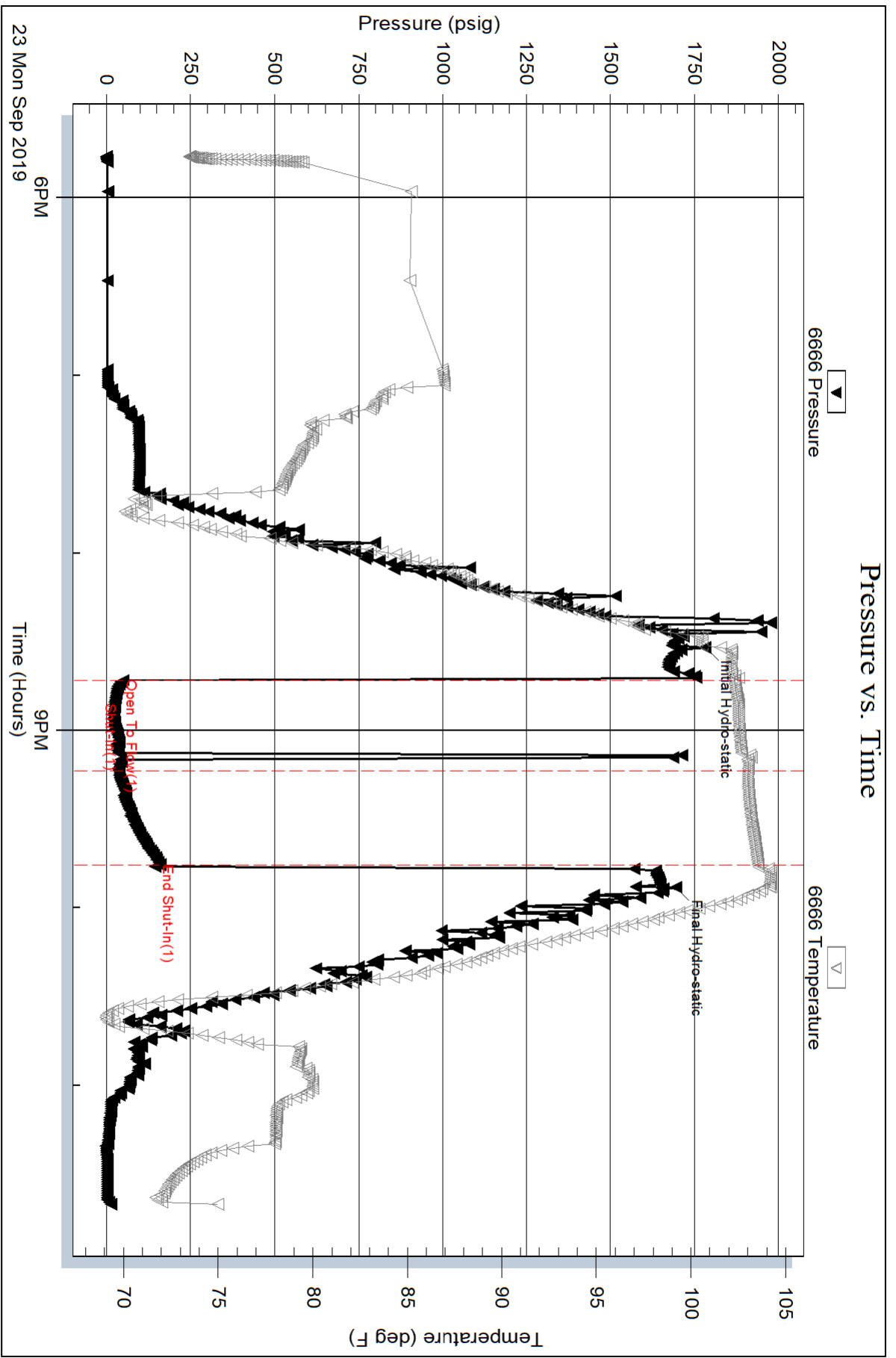
Serial #: 6666

Inside

Darrah Oil Company

Birback-Keller Unit

DST Test Number: 2

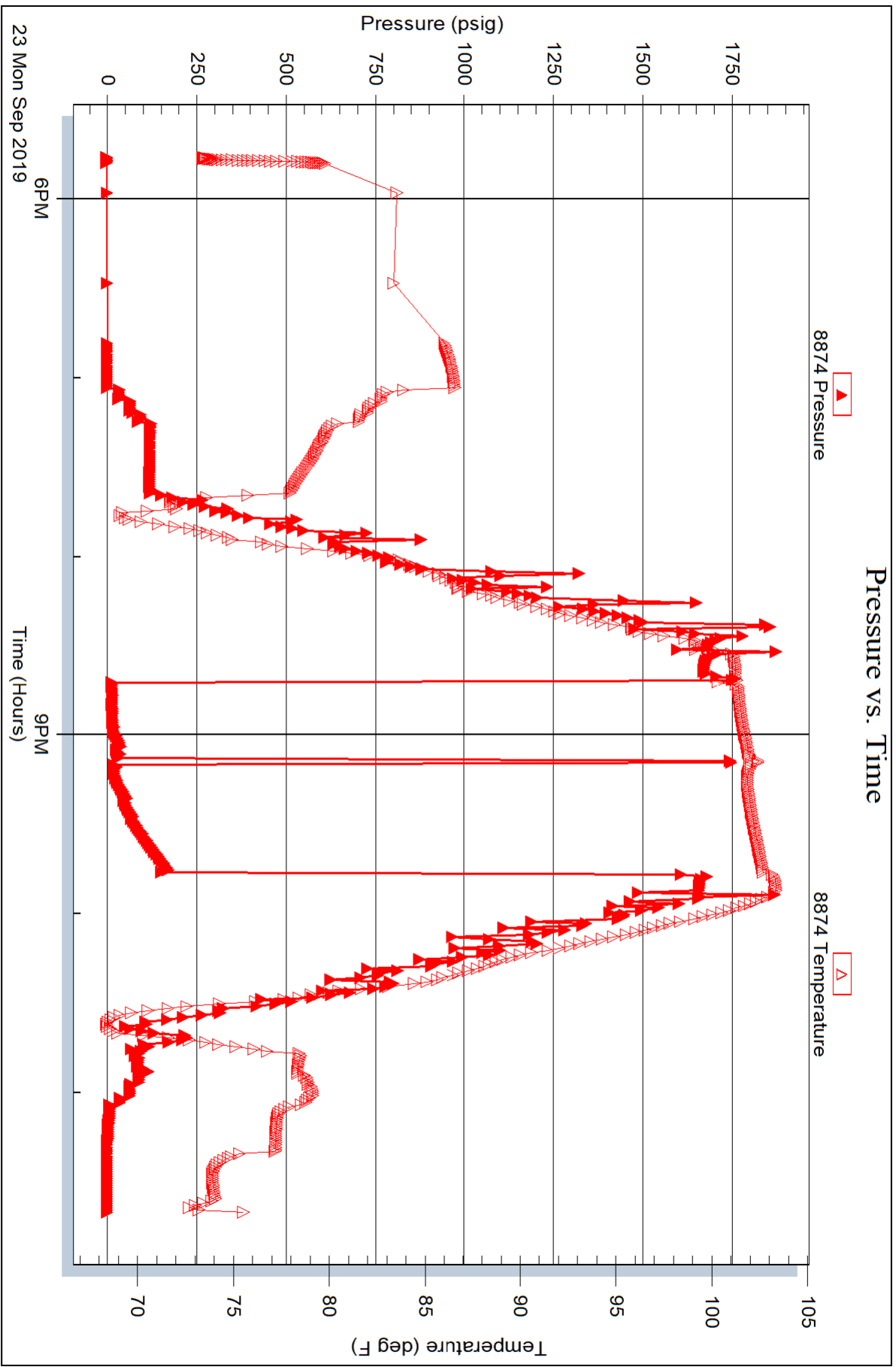


Serial #: 8874

Outside Darrah Oil Company

Birback-Keller Unit

DST Test Number: 2



Trilobite Testing, Inc

Ref. No: 65824

Printed: 2019.09.24 @ 06:13:24