

KANSAS CORPORATION COMMISSION
OIL & GAS CONSERVATION DIVISION

TEMPORARY ABANDONMENT WELL APPLICATION

OPERATOR: License#
Name:
Address 1:
Address 2:
City: State: Zip:
Contact Person:
Phone:
Contact Person Email:
Field Contact Person:
Field Contact Person Phone:

API No. 15-
Spot Description:
Sec. Twp. S. R.
GPS Location: Lat: Long:
Datum: NAD27 NAD83 WGS84
County: Elevation:
Lease Name: Well #:
Well Type: Oil Gas OG WSW Other:
SWD Permit #: ENHR Permit #:
Gas Storage Permit #:
Spud Date: Date Shut-In:

Table with 7 columns: Conductor, Surface, Production, Intermediate, Liner, Tubing. Rows include Size, Setting Depth, Amount of Cement, Top of Cement, Bottom of Cement.

Casing Fluid Level from Surface: How Determined? Date:
Casing Squeeze(s): to w / sacks of cement, to w / sacks of cement. Date:
Do you have a valid Oil & Gas Lease? Yes No
Depth and Type: Junk in Hole at Tools in Hole at Casing Leaks: Yes No Depth of casing leak(s):
Type Completion: ALT. I ALT. II Depth of: DV Tool: w / sacks of cement Port Collar: w / sack of cement
Packer Type: Size: Inch Set at: Feet
Total Depth: Plug Back Depth: Plug Back Method:

Geological Data:

Table with 4 columns: Formation Name, Formation Top, Formation Base, Completion Information. Rows 1 and 2.

UNDER PENALTY OF PERJURY I HEREBY ATTEST THAT THE INFORMATION CONTAINED HEREIN IS TRUE AND CORRECT TO THE BEST OF MY KNOWLEDGE

Submitted Electronically

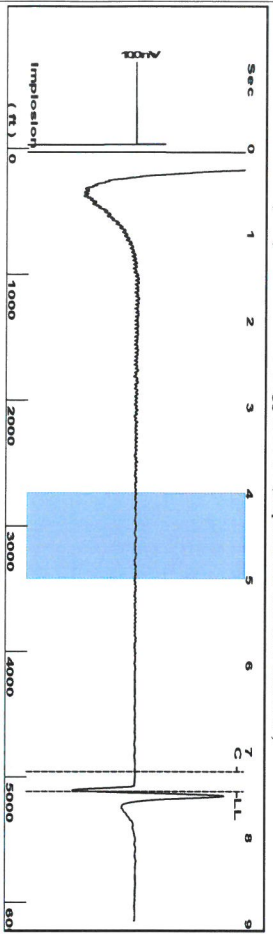
Do NOT Write in This Space - KCC USE ONLY
Date Tested: Results: Date Plugged: Date Repaired: Date Put Back in Service:
Review Completed by: Comments:
TA Approved: Yes Denied Date:

Mail to the Appropriate KCC Conservation Office:

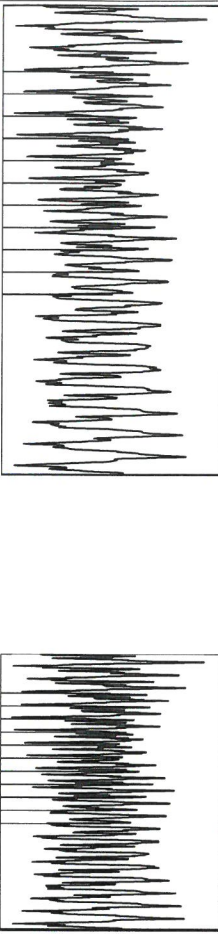
Table with 2 columns: Office Address, Phone. Rows for District Office #1, #2, #3, #4.



Group: MyWells Well: Gregg A #1-30 (acquired on: 03/31/23 12:44:55 )



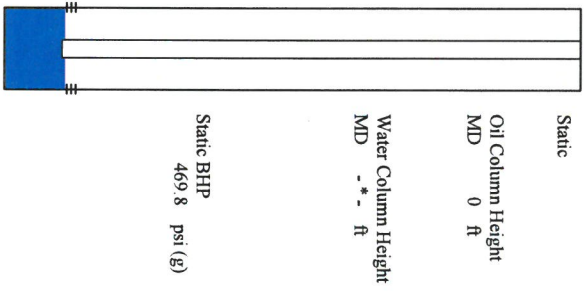
Filter Type High Pass Automatic Collar Count Yes  
 Manual Acoustic Veloc 331.93 ft/s Manual JTS/sec 21.0084  
 Time 7.46 sec  
 Joints 161.292 Jts  
 Depth 5112.94 ft



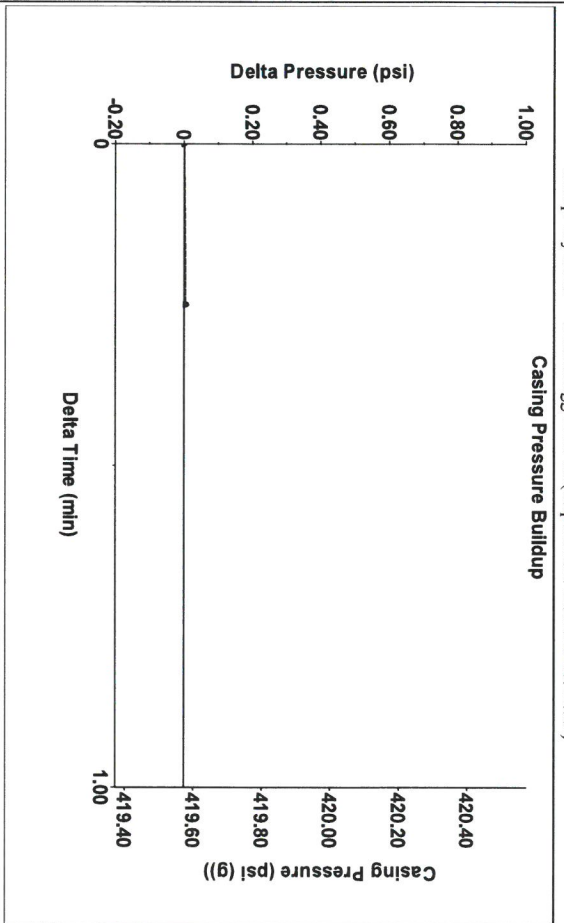
Analysis Method: Automatic

Group: MyWells Well: Gregg A #1-30 (acquired on: 03/31/23 12:44:55 )

Production	Potential	Casing Pressure	Static
Current	-*- BBL/D	419.6 psi (g)	Oil Column Height
Water	-*- BBL/D	0.0 psi	MD 0 ft
Gas	-*- Mscf/D	0.25 min	Water Column Height
IPR Method	Vogel	Gas/Liquid Interface Pressure	MD -*- ft
PBHP/SBHP	-*-	470.9 psi (g)	Static BHP
Production Efficiency	0.0	Liquid Level Depth	469.8 psi (g)
Oil	40 deg API	5112.94 ft	
Water	1.05 Sp.Gr.H2O	Pump Inake Depth	
Gas	0.62 Sp.Gr.AIR	5151.00 ft	
Acoustic Velocity	1370.76 ft/s	Formation Depth	
		5046.00 ft	

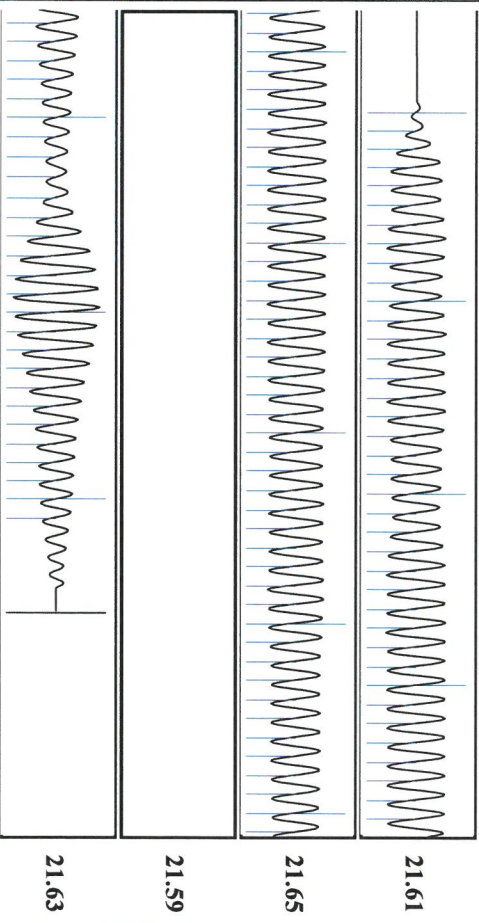


Group: MyWells Well: Gregg A #1-30 (acquired on: 03/31/23 12:44:55 )



Change in Pressure 0.00 psi PT 8064  
 Change in Time 0.25 min Range 0 - ? psi

Group: MyWells Well: Gregg A #1-30 (acquired on: 03/31/23 12:44:55 )



Acoustic Velocity 1370.76 ft/s Joints counted 151  
 Joints Per Second 21.6208 Jts/sec Joints to liquid level 161.292  
 Depth to liquid level 5112.94 ft Filter Width 19.0084  
 Automatic Collar Count Yes Time to 1st Collar 0.248 7.232

April 05, 2023

Michael Reilly  
Grand Mesa Operating Company  
1700 N WATERFRONT PKWY BLDG 600  
WICHITA, KS 67206-5514

Re: Temporary Abandonment  
API 15-033-21749-00-00  
GREGG A 1-30  
NE/4 Sec.30-33S-16W  
Comanche County, Kansas

Dear Michael Reilly:

"Your temporary abandonment (TA) application for the well listed above has been approved. In accordance with K.A.R. 82-3-111 the TA status of this well will expire 04/05/2024.

- \* If you return this well to service or plug it, please notify the District Office.
- \* If you sell this well you are required to file a Transfer of Operator form, T-1.
- \* If the well will remain temporarily abandoned, you must submit a new TA application, CP-111, before 04/05/2024.

You may contact me at the number above if you have questions.

Very truly yours,

Michael Maier"