

KANSAS CORPORATION COMMISSION
OIL & GAS CONSERVATION DIVISION

Form must be Typed
Form must be signed

TEMPORARY ABANDONMENT WELL APPLICATION

All blanks must be complete

OPERATOR: License#
Name:
Address 1:
Address 2:
City: State: Zip:
Contact Person:
Phone:
Contact Person Email:
Field Contact Person:
Field Contact Person Phone:

API No. 15-
Spot Description:
Sec. Twp. S. R.
feet from N / S Line of Section
feet from E / W Line of Section
GPS Location: Lat: , Long:
Datum: NAD27 NAD83 WGS84
County: Elevation: GL KB
Lease Name: Well #:
Well Type: (check one) Oil Gas OG WSW Other:
SWD Permit #: ENHR Permit #:
Gas Storage Permit #:
Spud Date: Date Shut-In:

Table with 7 columns: Conductor, Surface, Production, Intermediate, Liner, Tubing. Rows include Size, Setting Depth, Amount of Cement, Top of Cement, Bottom of Cement.

Casing Fluid Level from Surface: How Determined? Date:
Casing Squeeze(s): to w / sacks of cement, to w / sacks of cement. Date:
Do you have a valid Oil & Gas Lease? Yes No
Depth and Type: Junk in Hole at Tools in Hole at Casing Leaks: Yes No Depth of casing leak(s):
Type Completion: ALT. I ALT. II Depth of: DV Tool: w / sacks of cement Port Collar: w / sack of cement
Packer Type: Size: Inch Set at: Feet
Total Depth: Plug Back Depth: Plug Back Method:

Geological Data:

Table with 4 columns: Formation Name, Formation Top, Formation Base, Completion Information. Rows 1 and 2.

UNDER PENALTY OF PERJURY I HEREBY ATTEST THAT THE INFORMATION CONTAINED HEREIN IS TRUE AND CORRECT TO THE BEST OF MY KNOWLEDGE

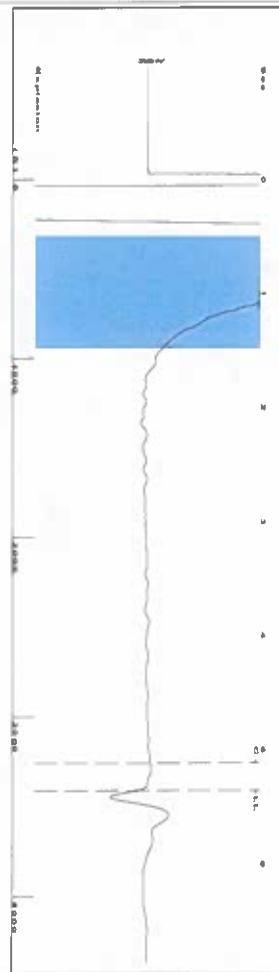
Submitted Electronically

Do NOT Write in This Space - KCC USE ONLY
Date Tested: Results: Date Plugged: Date Repaired: Date Put Back in Service:
Review Completed by: Comments:
TA Approved: Yes Denied Date:

Mail to the Appropriate KCC Conservation Office:

Table with 3 columns: District Office #, Address, Phone. Rows 1-4.

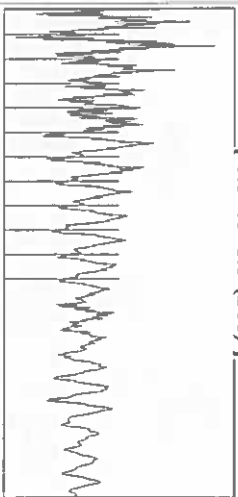
Group: SUBLETTE Well: Harkrader C-1 (acquired on: 07/19/24 11:25:26)



Filter Type High Pass
Manual Acoustic Velo 1262.95 ft/s
Automatic Collar Count Yes
Manual JTS/sec 19.9203

Time 5.369 sec
Joints 107.602 Jts
Depth 3410.98 ft

[0.5 to 1.5 (Sec)]



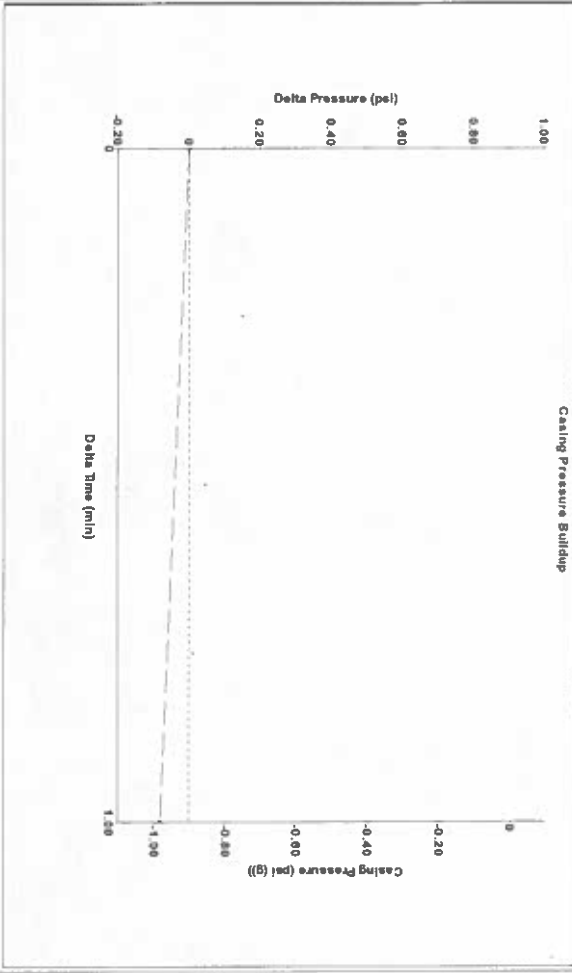
Analysis Method: Automatic



Group: SUBLETTE Well: Harkrader C-1 (acquired on: 07/19/24 11:25:26)

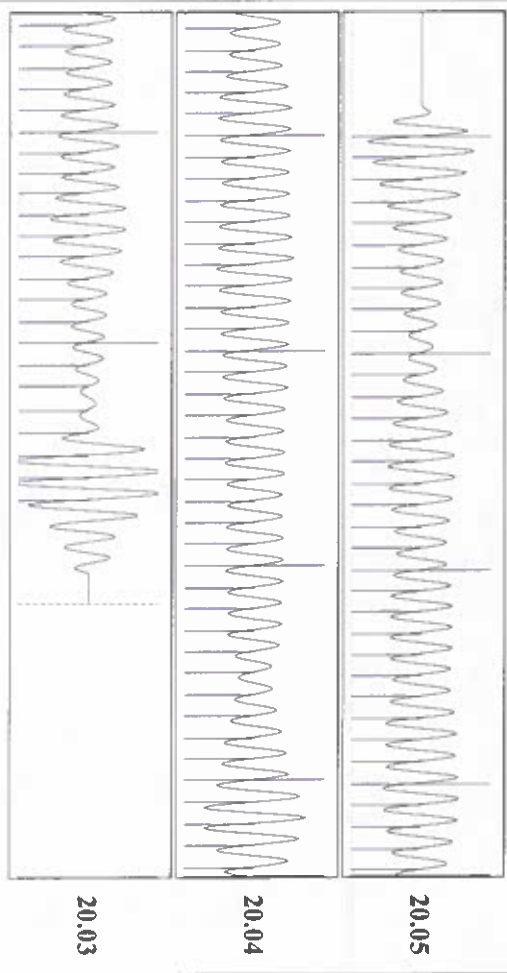
Production	Potential	Casing Pressure	Producing
Oil -*- Water -*- Gas -*-	-*- BB/LD -*- BB/LD -*- Misc/D	-0.9 psi (g) Casing Pressure Buildup -0.081 psi 1.00 min	Annular Gas Flow 0 Misc/D % Liquid 100 %
IPR Method PBHP/SBHP Production Efficiency	Vogel -*- 0.0	Gas/Liquid Interface Pressure 0.3 psi (g)	
Oil 40 deg. API Water 1.05 Sp.Gr. H2O Gas 0.72 Sp.Gr. AIR		Liquid Level Depth 3410.98 ft Pump Intake Depth 5404.00 ft Formation Depth 5394.00 ft	Pump Intake 663.9 psi (g) Producing BHP 660.7 psi (g) Static BHP -*- psi (g)
Acoustic Velocity	1270.62 ft/s		
Formation Submergence			
Total Gaseous Liquid Column HT (TVD)	1993 ft		
Equivalent Gas Free Liquid HT (TVD)	1993 ft		
7/19/24			

Group: SUBLETTE Well: Harkrader C-1 (acquired on: 07/19/24 11:25:26)



Change in Pressure -0.08 psi
Change in Time 1.00 min
PT 14679
Range 0 - 2 psi

Group: SUBLETTE Well: Harkrader C-1 (acquired on: 07/19/24 11:25:26)



Acoustic Velocity 1270.62 ft/s
Joints Per Second 20.0413 Jts/sec
Depth to liquid level 3410.98 ft
Automatic Collar Count Yes

Joints counted 97
Joints to liquid level 107.602
Filter Width 17.9203
Time to 1st Collar 0.288

Conservation Division
District Office No. 1
210 E. Frontview, Suite A
Dodge City, KS 67801



Phone: 620-682-7933
<http://kcc.ks.gov/>

Andrew J. French, Chairperson
Dwight D. Keen, Commissioner
Annie Kuether, Commissioner

Laura Kelly, Governor

07/23/2024

Katherine McClurkan
Merit Energy Company, LLC
13727 Noel Road, Suite 1200
Dallas, TX 75240-7362

Re: Temporary Abandonment
API 15-175-21627-00-00
Harkrader C 1
NE/4 Sec.21-31S-32W
Seward County, Kansas

Dear Katherine McClurkan:

"Your temporary abandonment (TA) application for the well listed above has been approved. In accordance with K.A.R. 82-3-111 the TA status of this well will expire 07/23/2025.

- * If you return this well to service or plug it, please notify the District Office.
- * If you sell this well you are required to file a Transfer of Operator form, T-1.
- * If the well will remain temporarily abandoned, you must submit a new TA application, CP-111, before 07/23/2025.

You may contact me at the number above if you have questions.

Very truly yours,

Michael Maier"