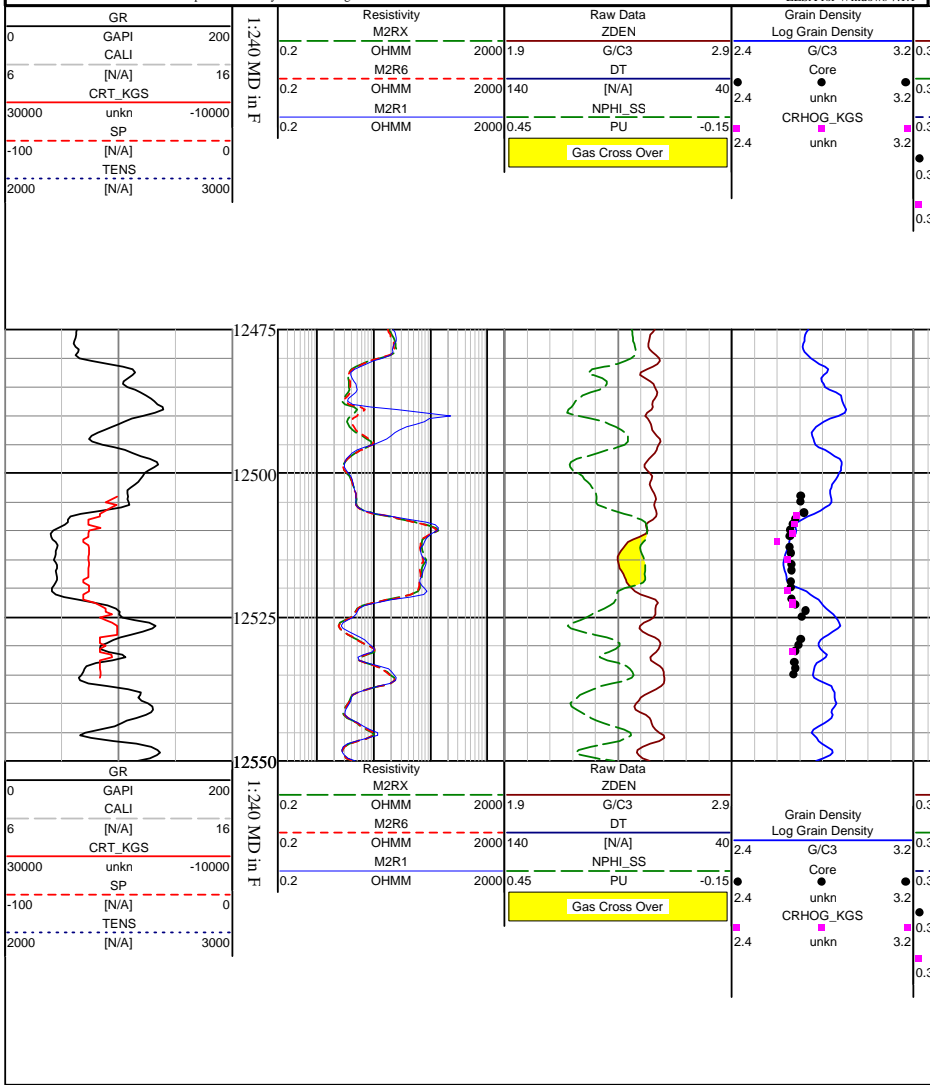


Plot File: Final_KGS_DepthPlot_Phase1.PLT Well File: GR_Shell Vible 1D-11D.las Time: 11:12 AM Date: Thu, Mar 06, 2008 Log analysis: N/A		Company: SHELL ROCKY MOUNTAIN PRODUCTION, LLC Well: VIBLE 1D-11D Field: GR_Shell Vible 1D-11D.las Field: PINEDALE ANTICLINE County: SUBLETTE State: WYOMING Country: USA API: 4903523799		Location: 1886 FNL & 372 FEL Location: GAMMA RAY / CALPER Location: ZD/CN Location: N/A	
Permanent datum: G.L. @ 6890 FT Log measured from: K.B. 25 FT above permanent datum Drift measured from: K.B.		Sect: 11 Twp: 31N Range: 109W Elevation: KB: 6915 FT DR: 6914 FT GL: 6890 FT		Date: 22-JUN-2005 10-JUL-2005 Run No.: 1 2 Depth (Diller): 9090 12751 Depth (Log): 9103 12786 Bottom Logged Interval: 9103 12785.5 Top Logged Interval: 6500 9067 Casting Diller: 9.625 @ 4501 7 @ 9070 Casting Log: 4500 9067 Bit Size: 8.5 IN 6 Type Fluid in Hole: WEISSADRIIL INVERT Density: 11.8 48 13.5 49 Viscosity: Fluid Loss: N/A pH: TANK N/A Source of Sample: N/A @ N/A Run @ Misc. Temp.: N/A @ N/A Run @ Meas. Temp.: N/A @ N/A Run @ Meas. Temp.: N/A @ N/A Source: Ref: N/A Run @ BHT: N/A @ 177 Run @ BHT: N/A @ 230 Tool Last on Bottom: 111 HOURS Max. Rec. Temp.: 177 Equipment Location: RK SPRINGS Recorded By: A.SINHA Witnessed By: MS.VICKI GRADMAN	

Disclaimer: Interpretations from electrical or other measurements in wellbores are opinions based upon inferences as to tool response in the underground formation. The Discovery Group Inc. cannot and does not guarantee the accuracy or correctness of any interpretations made using the LESA for Windows software. Consequently, The Discovery Group Inc. shall not be liable or responsible for any loss or damages incurred as a result.



LESAS for Windows 7.1.1