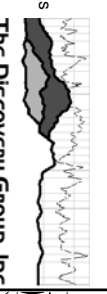
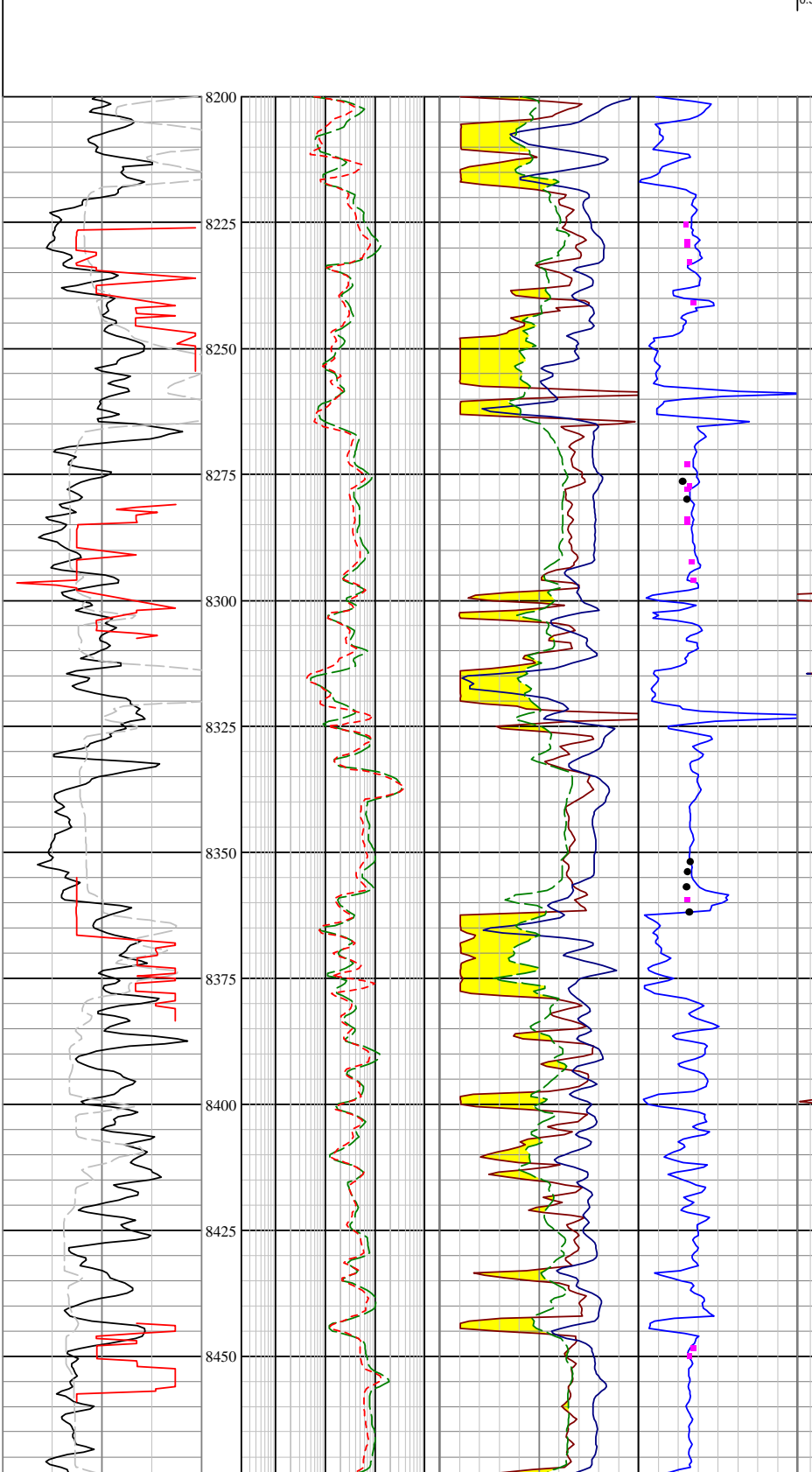


Plot File: Final_KGS_DepthPlot_Phase1.PLT Well File: Mapco NB 11-17F River Bend Unit/Las Time: 12:47 PM Date: Tue, Apr 08, 2008 Log analyst: N/A			Company: MAPCO PROD CO Well: MAPCO R.B.U. "F" #11-17 File: Mapco NB 11-17F River Bend Unit/Las Field: RIVERBEND UNIT County: UTAH State: UTAH APR: 430473058400	Country: UNITED STATES OF AMERICA Location: S17 T10S R20E DRESSER ATLAS
Permanent datum: GL @ 0.0000 F Log measured from: KB Drig measured from: KB	Elev.: KB: 5118.0000 F DR: 5117.0000 F GL: 0.0000 F			
Log Analyst: N/A Date: Tue, Apr 08, 2008 Company: MAPCO PROD CO Well: MAPCO R.B.U. "F" #11-17 File: Mapco NB 11-17F River Bend Unit/Las Field: RIVERBEND UNIT County: UTAH State: UTAH APR: 430473058400		Country: UNITED STATES OF AMERICA Location: S17 T10S R20E DRESSER ATLAS		
Permanent datum: GL @ 0.0000 F Log measured from: KB Drig measured from: KB	Elev.: KB: 5118.0000 F DR: 5117.0000 F GL: 0.0000 F			

Disclaimer: Interpretations from electrical or other measurements in wellbores are opinions based upon inferences as to tool response in the underground formation. The Discovery Group Inc. cannot and does not guarantee the accuracy or correctness of any interpretations made using the LESA for Windows software. Consequently, The Discovery Group Inc. shall not be liable or responsible for any loss or damages incurred as a result.

GR	GAPI	CALI	IN	CRT_KGS	SP	[N/A]	TENS
0	200		16	10000	0		3000
20000							
-100							
2000							



GR	GAPI	CALI	IN	CRT_KGS	SP	[N/A]	TENS
0	200		16	10000	0		3000
20000							
-100							
2000							

