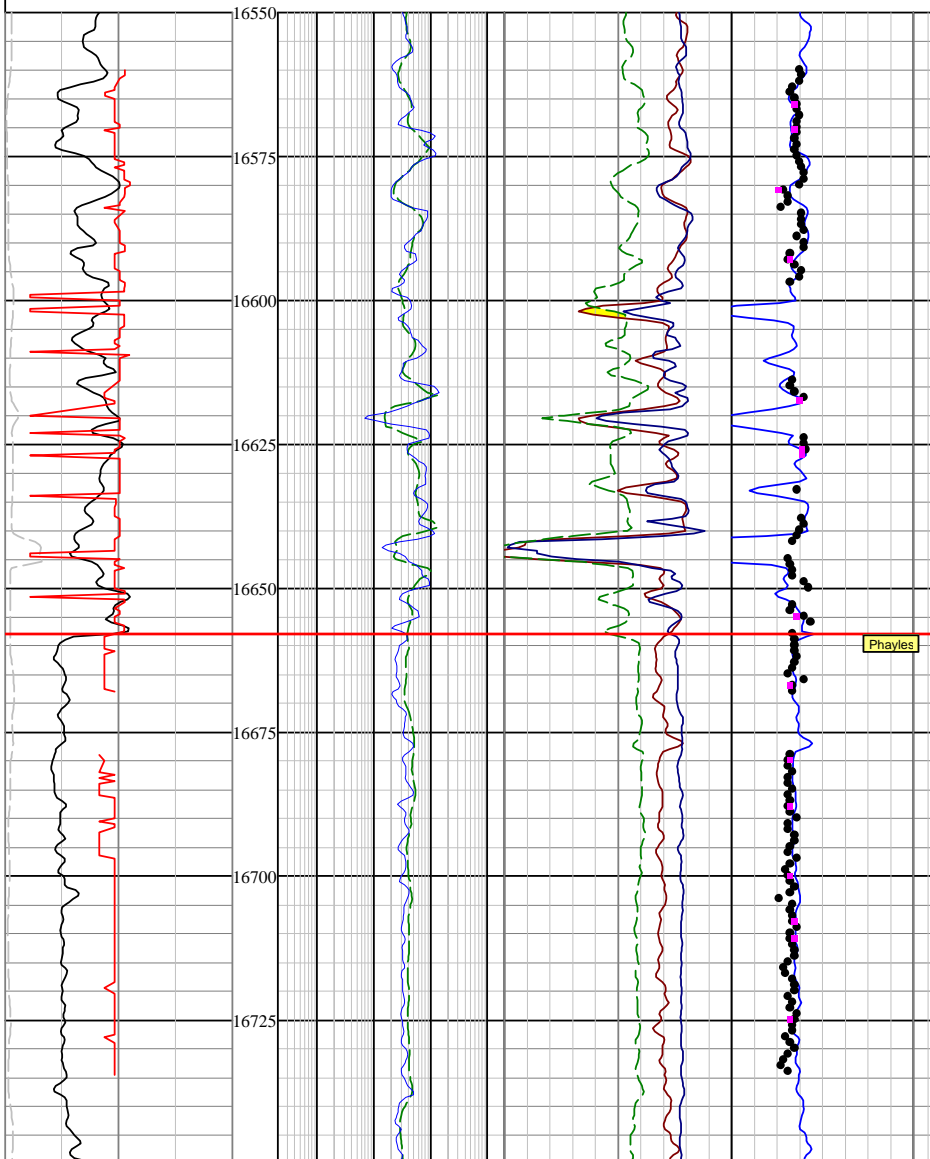


DISCLAIMER: Interpretations from electrical or other measurements in wellbores are opinions based upon inferences as to tool response in the underground formation. The Discovery Group Inc. cannot and does not guarantee the accuracy or correctness of any interpretations made using the LESA for Windows software. Consequently, The Discovery Group Inc. shall not be liable or responsible for any loss or damages incurred as a result.

Plot File: Final_KGS_DepthPlot_Phase1.PLT Well File: Wind_Monsanto_1-27 Lookoutlas Time: 11:58 AM Date: Thu, Mar 06, 2008 Log analyst: Stefan Whittaker	Company: MONSANTO OIL CO Well: NO 1 27 LOOKOUT Field: Wind_Monsanto_1-27 Lookoutlas Field: Madden Deep Unit County: FREMONT State: WYOMING API: 4901320836	Location: 1980 FNL & 1980 FEL Location: 1980 FNL & 1980 FEL Location: 1980 FNL & 1980 FEL
Permanent datum: 5309 ft @ 5309 ft Log measured from: N/A Drift measured from: N/A	Sect: 27 Typ: 39N Range: 91W Elev: KB: 5340 DR: N/A GL: 5309	Location: 1980 FNL & 1980 FEL Location: 1980 FNL & 1980 FEL Location: 1980 FNL & 1980 FEL
Date: 29-JUN-1979 Run No.: ONE Depth Dthier: 15150 Depth Logler: 15160 Bottom Logged Interval: 15157 Top Logged Interval: 6000 Casting Dthier: 13.375 @ 2488 Casting Logler: 15160 Bit Size: 9.875 Type Fluid in Hole: Oil Base Mud Density: 11.0 Viscosity: 48 pH: 8.0	Date: 31-AUG-1979 Run No.: TWO Depth Dthier: 17990 Depth Logler: 17990 Bottom Logged Interval: 17987 Top Logged Interval: 6000 Casting Dthier: 7.875 @ 15154 Casting Logler: 15160 Bit Size: 6.5 Type Fluid in Hole: FCG Density: 14.1 Viscosity: 47 pH: 8.2	Date: 31-AUG-1979 Run No.: TWO Depth Dthier: 17990 Depth Logler: 17990 Bottom Logged Interval: 17987 Top Logged Interval: 6000 Casting Dthier: 7.875 @ 15154 Casting Logler: 15160 Bit Size: 6.5 Type Fluid in Hole: FCG Density: 14.1 Viscosity: 47 pH: 8.2

GR	Resistivity	Raw Data	Grain Density	Effective Porosities	Cross Plot Porosities	Water Saturation	Permeability
0	ILD OHMM	RHOB G/C3	G/C3 2.9	PHIDE V/V	PHIDNE V/V	PHIE V/V	0.0001 mD
6	ILM OHMM	DT US/F	Core 2.4	PHINE V/V	CPHII unkn	PHISW V/V	0.0001 CKKI
35000	SFL OHMM	NPHI_SS V/V	CRHOG_KGS unkn	PHISE V/V	CPHI_KGS unkn	CSW unkn	0.0001 unkr
-100				CPHII unkr		SW unkn	0.0001 unkr
2000				CPHI_KGS unkr		MARINE V/V	
						BVWI [N/A]	
						unkr 0.5	



GR	Resistivity	Raw Data	Grain Density	Effective Porosities	Cross Plot Porosities	Water Saturation	Permeability
0	ILD OHMM	RHOB G/C3	G/C3 2.9	PHIDE V/V	PHIDNE V/V	PHIE V/V	0.0001 mD
6	ILM OHMM	DT US/F	Core 2.4	PHINE V/V	CPHII unkn	PHISW V/V	0.0001 CKKI
35000	SFL OHMM	NPHI_SS V/V	CRHOG_KGS unkn	PHISE V/V	CPHI_KGS unkn	CSW unkn	0.0001 unkr
-100				CPHII unkr		SW unkn	0.0001 unkr
2000				CPHI_KGS unkr		MARINE V/V	
						BVWI [N/A]	
						unkr 0.5	